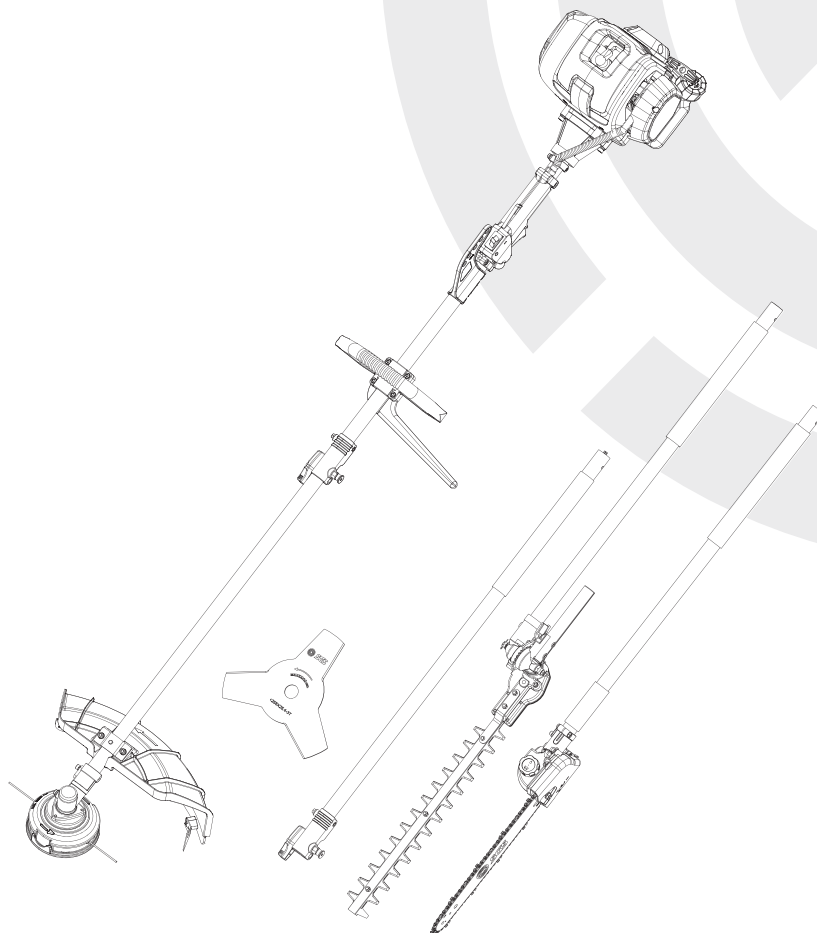




OWNER'S OPERATING MANUAL
MODEL NO: PMULT520



52 cc Petrol multi-tool 5 in 1 **CE**

IMPORTANT! PLEASE READ THESE INSTRUCTIONS CAREFULLY. NOTE ALL SAFETY INSTRUCTIONS AND WARNINGS. USE THE PRODUCT CORRECTLY AND WITH CARE FOR THE PURPOSE FOR WHICH IT IS INTENDED. FAILURE TO FOLLOW THESE INSTRUCTIONS MAY CAUSE DAMAGE TO PROPERTY AND/OR PERSONAL INJURY.

PLEASE KEEP THESE INSTRUCTIONS SAFE AND AVAILABLE FOR FUTURE REFERENCE.

TABLE OF CONTENTS

Specification	Page 4
General safety precautions	Page 7
Description of the symbols	Page 13
Product overview	Page 17
Main unit	Page 17
Hedge Trimmer Attachment	Page 18
Pole pruner Attachment	Page 19
Brush cutter/Grass Trimmer	Page 20
Extension Attachment	Page 22
Accessories	Page 22
Assembly	Page 23
You will need	Page 23
Unpacking	Page 23
Assembling the front handle and barrier bar	Page 24
Assembling the pole pruner attachment	Page 25
Assembling the grass trimmer	Page 29
Assembling the brush cutter	Page 31
Assembling the attachment to the Main shaft tube	Page 33
Filling up fuel and oil	Page 33
Operation	Page 35
Intended use	Page 35
Operating controls	Page 36
Safety equipment	Page 37
Check before starting	Page 38
Starting the engine	Page 39
Starting the machine with a cold engine	Page 39
Starting the machine with a warm engine	Page 40
After starting the engine	Page 40
Stopping the engine	Page 40
Using the brush cutter and grass trimmer	Page 41
Using the pole pruner	Page 44
Using the hedge trimmer	Page 46

Cleaning and maintenance	Page 47
Cleaning the housing	Page 48
Cleaning the attachments	Page 48
Hedge trimmer	Page 48
Pole pruner	Page 49
Cutting line	Page 49
Air filter	Page 52
Fuel, fuel lines and fuel filter	Page 52
Spark plug	Page 53
Maintenance table	Page 54
Spare parts/replacement parts	Page 55
Storage	Page 55
Short term storage	Page 55
Long term storage	Page 55
Transportation	Page 56
Troubleshooting	Page 57
Recycling and disposal	Page 57
Warranty	Page 58
Parts diagram	Page 59
Declaration of conformity	Page 64

SPECIFICATION

Engine	
Engine type:	SL44, 2-cycle, vertical single cylinder
Engine displacement:	52 cm ³ (52 cc)
Maximum engine power (in accordance with ISO 8893):	1.4 kW
Maximum operating engine speed (rotational frequency):	10000 min ⁻¹
Idle speed:	2250–2750 min ⁻¹
Clutch engagement speed:	3850 min ⁻¹
Fuel tank type:	850 cm ³ (ml)
Fuel type:	Octane rating of at least 90, unleaded, maximum 10% renewable ethanol (E10 or below)
Fuel consumption (in accordance with ISO 8893) at max. engine performance:	0.75 kg/h
Specific fuel consumption (in accordance with to ISO 8893) at max. engine performance:	536 g/kWh
Engine oil type:	Top quality synthetic oil specifically for two-stroke engines, of JASO FC minimum specification
Mixture ratio petrol:oil:	40:1
Spark plug type:	TORCH L8RTC
Spark plug gap:	0.6 – 0.7 mm
Weight (without fuel, cutting attachment, guard and harness):	approx. 6.4 kg
Brush cutter	
Weight (empty tank):	8.1 kg
Blade size:	3 teeth, Ø255 x Ø25.4 mm
Maximum rotational frequency of the spindle:	8000 min ⁻¹

Grass trimmer	
Weight (empty tank):	8.2 kg
Line spool diameter:	Ø2.4 mm
Max. cutting width:	Ø430 mm
Maximum rotational frequency of the spindle:	7000 min ⁻¹

Hedge trimmer	
Weight (empty tank):	8.5 kg
Max. cutting length:	395 mm
Teeth gap:	24 mm
Reciprocating speed:	2500 min ⁻¹
Adjustable cutting angle range:	-90° to +60°

Pole pruner	
Weight (empty tank):	8.1 kg
Chain oil tank:	150 cm ³ (ml)
Saw chain speed:	max. 21 m/s
Max. cutting length:	300 mm (11.8")
Guide bar length:	305 mm
Guide bar type:	M1501244-1318, Trilink
Saw chain type:	CL15044X 3/8", Trilink
Chain pitch:	9.525 mm (3/8")
Chain gauge (thickness of drive links):	1.27 mm (0.050")
Drive sprocket (teeth and pitch):	7 teeth x 9.525 mm (3/8")

Sound levels

Equivalent sound pressure level at operator position determined in accordance with ISO 22868	
Brush cutter $L_{pA,av}$:	97.5 dB(A)
Grass trimmer $L_{pA,av}$:	97.5 dB(A)
Hedge trimmer $L_{pA,av}$:	98.6 dB(A)
Pole pruner $L_{pA,av}$:	98.2 dB(A)
Uncertainty K_{pA} :	3 dB(A)

Sound power level determined in accordance with ISO 22868 and Directive 2000/14/EC	
Measured max. L_{wA} :	111.7 dB(A)
Uncertainty K_{wA} :	2.96 dB(A)
Guaranteed sound power level L_{wA} (acc. to 2000/14/EC amended by 2005/88/EC):	115 dB(A)

Equivalent vibration total value determined in accordance with ISO 22867	
Front handle max. a_{hw} :	10.763 m/s ²
Rear handle max. a_{hw} :	11.274 m/s ²
Uncertainty K:	1.5 m/s ²

The sound values have been determined according to noise test code given in ISO 10884 and ISO 22867, using the basic standards ISO 22868.

Wear hearing protection, especially when sound pressure is over 80 dB(A).

The declared vibration value has been measured in accordance with a standard test method (according to EN ISO 11680-1 / EN ISO 10517/ EN ISO 11806-1) and may be used for comparing one machine with another. The declared vibration value may also be used to evaluate the exposure for the user caused by vibration in advance.



WARNING! Depending on the actual use of the machine the vibration values can differ from the declared total. Adopt proper measures to protect yourself against vibration exposures. Take the whole work process including times the machine is running under no load or switched off into consideration! Proper measures include among others regular maintenance and care of the machine and accessories, keeping hands warm, periodical breaks and proper planning of work processes!

IMPORTANT READ CAREFULLY BEFORE USE KEEP FOR FUTURE REFERENCE

- This machine is not intended for use by children and persons with reduced physical, sensory or mental capabilities, or lack of experience and knowledge.
- Children should be supervised to ensure that they do not play with the machine.



WARNING! Your safety and the safety of others is very important. Of course, it is not practical or possible to warn you about all the hazards associated with operating or maintaining this machine. At all times you must use your own good judgment.

Training

- Read the instructions carefully. Be familiar with the controls and the proper use of the machine.

Preparation

- Never allow children or people unfamiliar with these instructions to use the machine. Local regulations can restrict the age of the operator.
- Keep bystanders and pets at a safe distance from the work area. Never operate the machine while people, especially children, or pets are nearby.
- Keep in mind that the operator or user is responsible for accidents or hazards occurring to other people or their property.
- Wear ear protection and safety glasses at all times while operating the machine.
- Always wear substantial footwear and long trousers while operating the machine. Do not operate the machine when barefoot or wearing open sandals.
- **WARNING** - Petrol is highly flammable.
 - store fuel in containers specifically designed for this purpose,
 - refuel outdoors only and do not smoke while refuelling,
 - add fuel before starting the engine. Never remove the cap of the fuel tank or add petrol while the engine is running or when the engine is hot,
 - if petrol is spilled, do not attempt to start the engine but move the machine away from the area of spillage and avoid creating any source of ignition until petrol vapours have dissipated.
- Replace all fuel tanks and bottle caps securely.
- Do not attempt to tackle any job that you are not adequately trained for.
- Do not operate the machine if it has faulty safety equipment or damaged parts.
- Do not under any circumstances modify the machine. Modifications can result in serious personal injury or death.

- Servicing and maintenance, other than listed in this manual, should be performed by an authorised service centre.
- First time user should have practical instruction in the use of the machine and protective equipment from an experienced operator.
- National regulation can restrict the use of the machine.

Clothing and personal protective equipment (PPE)

- Secure long hair so that they are above the shoulder level.
- Do not wear loose fitting clothing or jewellery as those could be drawn into the engine or catch a moving part of the machine.
- Use the following safety clothing and personal protective equipment (PPE) when operating the machine:
 - Wear head protection (compliant to EN 397)
 - Wear hearing/ear protection (compliant to EN 352-1)
 - Wear eye protection (compliant to EN 166)
 - Wear protective gloves (compliant to EN ISO 21420 Class 0)
 - Wear protective clothing (compliant to EN ISO 11393-2, EN ISO 13688 Class 1)
 - Wear protective and slip-resistant footwear (compliant to EN ISO 20345 Class 2)
 - First Aid Kit in case of injury
 - Dry powder fire extinguisher readily available

Operation

- Keep all parts of the body away from the machine when the machine is operating. Before starting the engine, make sure the machine is not contacting any objects and is free from obstructions. A moment of inattention while operating the machine may cause entanglement of your clothing or body.
- Keep bystanders and animals at least 15 metres away from the machine.
- Keep the machine a sufficient distance of at least 15 metres away from electrical power lines.
- Beware of thrown objects. Objects thrown by the machine could hit the operator or other bystanders. Always ensure that other people and pets remain at a safe distance from the machine when it is in operation.
- Always ensure that all handles and guards are fitted properly before operating the machine. Never attempt to use an incomplete machine or one fitted with unauthorized parts.
- Do not lean too far forward while using the machine. Ensure you are standing firmly and keep your balance at all times. Use the supplied harness to spread the weight evenly on the body.
- Do not operate the machine with one hand! Serious injury to the operator or bystanders may result from one handed operation.
- Keep handles dry, clean and free from oil and grease. Greasy, oily handles are slippery and may cause loss of control.
- Do not operate the machine if you are tired or ill, under the influence of drugs, alcohol or medication.
- After operating the machine for 30 minutes, rest for 30 minutes and change the working position.

- When the machine is switched off, make sure the cutting attachment has stopped before setting down the machine.
- Do not operate the engine in a confined space where dangerous carbon monoxide fumes can collect.
- Operate the machine only in daylight or in good artificial light.
- Do not touch any moving parts before they have come to a complete stop.
- Operate the machine in a recommended position and only on a firm, level surface.
- Never operate the machine on a ladder or other insecure support.
- Operate the machine only at reasonable hours – not early in the morning or late at night when people might be disturbed.
- Make sure that the ventilation openings are kept clear of debris.
- Make sure that the air intake of the combustion engine is clear. Keep the air intake free of dust, dirt particles, gases and fumes.
- Never use the machine without the air filter installed.
- Check for signs of wear or damage before each use, after any impact or if the machine has been dropped. Repair the machine if necessary.
- Stop the engine, disconnect the spark plug:
 - before clearing blockages;
 - before cleaning or servicing the machine;
 - after striking a foreign object. Inspect the machine for damage and make repairs before restarting and operating the machine;
 - if the machine starts to vibrate abnormally (check immediately);
 - whenever you leave the machine unattended;
 - before refuelling.

Additional safety warnings for the brush cutter and grass trimmer

- Before starting the engine, make sure the cutting attachment is not contacting any objects.
- Thoroughly inspect the area where the machine is to be used and remove all stones, sticks, wires, bones and other foreign objects.
- Avoid operating the machine in wet grass or take additional precautions to avoid slipping.
- When operating on a slope, always stand at a lower level than the machine. Never cut or trim on an icy, slippery hill or slope.
- Do not operate the cutting attachment when crossing surfaces other than grass, and when transporting the machine to and from the working area.
- Take care against injury from a cutter fitted for trimming the cutting line length. After extending the cutter line always return the machine to its normal operating position before switching on.
- If the cutting mechanism does not stop when the engine idles, switch the engine off and stop using the machine. Then contact the authorised service centre.
- Do not operate the machine with a damaged or excessively worn cutting attachment.
- Do not operate the machine with cutting attachments other than provided. Do not use with saw blades or flail blades.
- Beware of blade thrust! Machines fitted with blades can be thrown violently to the side when the

blade comes into contact with a fixed object. A blade is capable of amputating an arm or leg.

Additional safety warnings for the pole pruner

- Before starting the engine, make sure the saw chain is not contacting any objects.
- Keep all parts of your body away from the saw chain. Do not hold material to be cut when the machine is operating. Stop the engine before clearing jammed material.
- One moment of inattention while operating the machine may result in a serious personal injury.
- To avoid injuries due to falling branches, do not stand under the branches that you want to cut off. Be aware of branches that may spring back and cause injuries. Work at an angle of approximately 60°.
- Keep an eye not only on the branches being cut, but also on falling material, to avoid tripping.
- Do not cut any wood that is lying on the ground and do not attempt to saw roots that are protruding from the soil. Avoid immersing the saw chain in the soil at all costs, as this could blunt the saw chain.

Additional safety warnings for the hedge trimmer

- Before starting the engine, make sure the cutter blades are not contacting any objects.
- Keep all parts of your body away from the cutter blade. Do not cut material or hold material to be cut when the machine is operating. Stop the engine before clearing jammed material. One moment of inattention while operating the machine may result in a serious personal injury.
- While trimming, ensure not to come into contact with objects such as fence wire or plant supports. This could cause damage to the cutter blades. Inspect the hedge to be cut carefully and remove any wires or other foreign objects.
- After changing the working angle, check whether both lock levers have clicked firmly into place. If one of the lock levers remains open, the second could be unintentionally be released by a branch and the cutter blade could swing down causing injuries.

Maintenance

- Keep all nuts, bolts and screws tight to be sure the machine is in a safe working condition.
- Disconnect the spark plug before performing maintenance, except for carburetor adjustments.
- Keep the engine and petrol storage area free of grass, thatch, moss, leaves or excessive grease to reduce the fire hazard.
- Examine the machine before each use and replace worn or damaged parts.
- Replace fuel lines and fuel filters every 2 years.

Fuel handling

- Always switch the machine off, disconnect the spark plug and let the machine cool down before refuelling it.
- Fuel and fuel vapour are highly flammable. Take care when handling fuel.
- Do not smoke while operating the machine, handling fuel or near fuel.
- Always use suitable aids such as funnels and filler necks. Do not spill any fuel on the machine or its exhaust system. There is a risk of ignition. Remove spilled fuel carefully from all parts of the machine. Any residue which may be present must have completely volatilised, before the machine is put into operation!

- Never refuel indoors.
- Never use the machine in environments where there is a risk of explosion. Exhaust gases and fuel fumes are noxious. Fuel fumes can ignite.
- Avoid skin contact with petrol.
- Do not eat or drink, while you are refuelling the machine. If you have swallowed petrol or oil, or if petrol or oil has got into your eyes, then seek the advice of a doctor immediately.
- Tighten the fuel tank cap thoroughly after refilling the fuel tank.
- Fuel vapour pressure may build up inside the fuel tank depending on the fuel used, weather conditions and the tank venting system. To reduce the risk of burns and other personal injuries, remove the fuel tank cap carefully to allow any pressure build up to release slowly.
- Ensure the spark plug is secure after refilling the fuel tank. Loose connector may cause electrical arcing that could ignite combustible fumes and cause a fire or explosion.
- Use caution when handling fuel. To avoid any accidental fires, move the machine at least 3 metres from the fuelling point before starting the engine.
- Do not operate the machine if it is leaking fuel.
- Do not remove the fuel tank cap while the engine is running.
- Do not store cans of fuel or refill the fuel tank in any place where there is a boiler, stove, wood fire, electrical sparks, welding sparks, or other sources of heat or fire which might ignite the fuel.
- If any fuel spillage occurs during refuelling, use a dry rag to wipe up spills and allow remaining fuel to evaporate before starting the engine on again.
- If you have spilt fuel on yourself or on your clothes, change your clothes and wash any part of your body that has come in contact with fuel before turning the engine on again.
- If fuel has ignited, put out the fire with a dry powder fire extinguisher.
- Never breathe in any fuel fumes, when you are refuelling the machine.
- Keep fuel fresh (less than 30 days) or add fuel stabiliser.

Transport and storage

- Stop the engine before transporting the machine.
- Carry the machine by the handle with the engine off. Handling the machine properly reduces the possibility of personal injury.
- Refit the transport guard on the cutting attachments (cutting blade and saw chain) during transportation or storage.
- Allow the engine to cool before storing in any enclosure.
- Never store the machine with petrol in the tank inside a building where fumes can reach an open flame or spark.
- Store the machine and fuel so that there is no risk of leakages or fumes coming into contact with sparks or naked flames from electrical equipment, electric motors, relays/switches, boilers etc.
- Empty machine of fuel after every use. Run the machine dry of fuel in idle before storage.
- Dispose of waste oil and fuel at a local petrol station, local authority centre or where facilities exist.

Vibration and noise reduction

To reduce the impact of noise and vibration emission, limit the time of operation, use low-vibration and low-noise operating modes as well as wear personal protective equipment.

Take the following points into account to minimise the vibration and noise exposure risks:

- Only use the machine as intended by its design and these instructions.
- Ensure that the machine is in good condition and well maintained.
- Use correct attachments for the machine and ensure they are in good condition.
- Keep a tight grip on the handles/gripping surfaces.
- Maintain this machine in accordance with these instructions and keep it well lubricated (where appropriate).
- Plan your work schedule to spread any high vibration tool use across a longer period of time.

Emergency

Familiarise yourself with the use of this machine by means of this instruction manual. Memorise the safety directions and follow them to the letter. This will help to prevent risks and hazards.

- **Always be alert when using this machine, so that you can recognise and handle risks early.** Fast intervention can prevent serious injury and damage to property.
- **Stop the engine and disconnect the spark plug if there are malfunctions.** Have the machine checked by a qualified professional and repaired, if necessary, before you operate it again.
- **In case of fire stop the engine and disconnect the spark plug.** Take fire-extinguishing measures immediately if the machine switch is no longer accessible.



WARNING! Never use water to extinguish the machine on fire. Burning fuel must be extinguished with special extinguishing agents! We recommend that you keep a suitable fire extinguisher within reach in your work area! We recommend to have dry powder fire extinguisher always available.

Residual risks

Even if you are operating this machine in accordance with all the safety requirements, potential risks of injury and damage remain. The following dangers can arise in connection with the structure and design of this machine:

- Health defects resulting from vibration emission if the machine is used over long periods of time or not adequately managed and properly maintained.
- Injuries and damage to property due to broken application tools or the sudden impact of hidden objects during use.
- Danger of injury and property damage caused by flying objects.
- Burns, if touching hot surfaces.



WARNING! This machine produces an electromagnetic field during operation! This field may under some circumstances interfere with active or passive medical implants! To reduce the risk of serious or fatal injury, we recommend persons with medical implants to consult their doctor and the medical implant manufacturer before operating this machine!

DESCRIPTION OF THE SYMBOLS



DANGER!

The signal word that indicates a hazard with a high level of risk which, if not avoided, will result in death or serious injury.



WARNING!

The signal word that indicates a hazard with a medium level of risk which, if not avoided, could result in death or serious injury.



CAUTION!

The signal word that indicates a hazard with a low level of risk which, if not avoided, could result in minor or moderate injury.



NOTICE!

Indicates a practical tip, advice or practice not related to personal injury.



Read the owner's manual. Before any use, refer to the corresponding paragraph in the present manual.



Complies with European regulations applicable to this machine.



Read and understand the instruction manual before using the machine. Restrict the machine to users who understand and follow all warnings and safety rules in this manual.



Wear protective gloves.



Wear hearing/ear protection.

Wear eye protection.

Wear head protection.



Wear protective and slip-resistant footwear.



Wear protective clothing.



Stop the engine before refuelling. Never refuel the machine while the engine is running.



40:1



Only refuel unleaded petrol and oil mixture in ration 40:1. Do not use any other mixture ratio.



Open flames in the work area, around the machine and in the vicinity of flammable materials are prohibited!



Do not smoke in the work area, around the machine and in the vicinity of flammable materials!



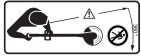
Risk of fire/flammable materials.



Hot surface, do not touch! High temperatures on the machine's surfaces and structural parts that could cause burns, if they are touched. The machine can also stay hot for a longer period of time after the operation!



Stop the engine and disconnect the spark plug before assembly, cleaning, adjustments, maintenance, storage and transportation.



Keep bystanders out of the working area during operation. A distance of at least 15 metres around the operator must be observed.



Beware of thrown objects. Objects thrown by the machine could hit the operator or other bystanders. Always ensure that other people and pets remain at a safe distance from the machine when it is in operation.



Beware of blade thrust! Machines fitted with blades can be thrown violently to the side when the blade comes into contact with a fixed object. Blade is capable of amputating an arm or leg.



Do not touch the cutting attachment until it stops completely.



Press the primer 6 times before starting the cold engine.



Filling for saw chain oil.



Direction of the saw chain.



Keep the pole pruner a sufficient distance away from electrical power lines. Keep at least 15 m distance from the electrical power lines.



Risk of loose clothing being drawn into air intake.



Risk of long hair being drawn into air inlet.



Choke closed (cold start position)



Choke open (run position)



Maximum rotational frequency of the shaft for the cutting attachment in min^{-1} .



Maximum rotational frequency of the shaft for the cutting attachment in min^{-1} .



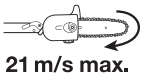
Max. cutting width of the trimmer head in cm.



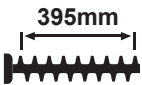
Diameter of the brush cutting blade in mm.



Max. cutting length of the pole pruner guide bar in mm.



Max. rotational frequency of pole pruner in m/s.



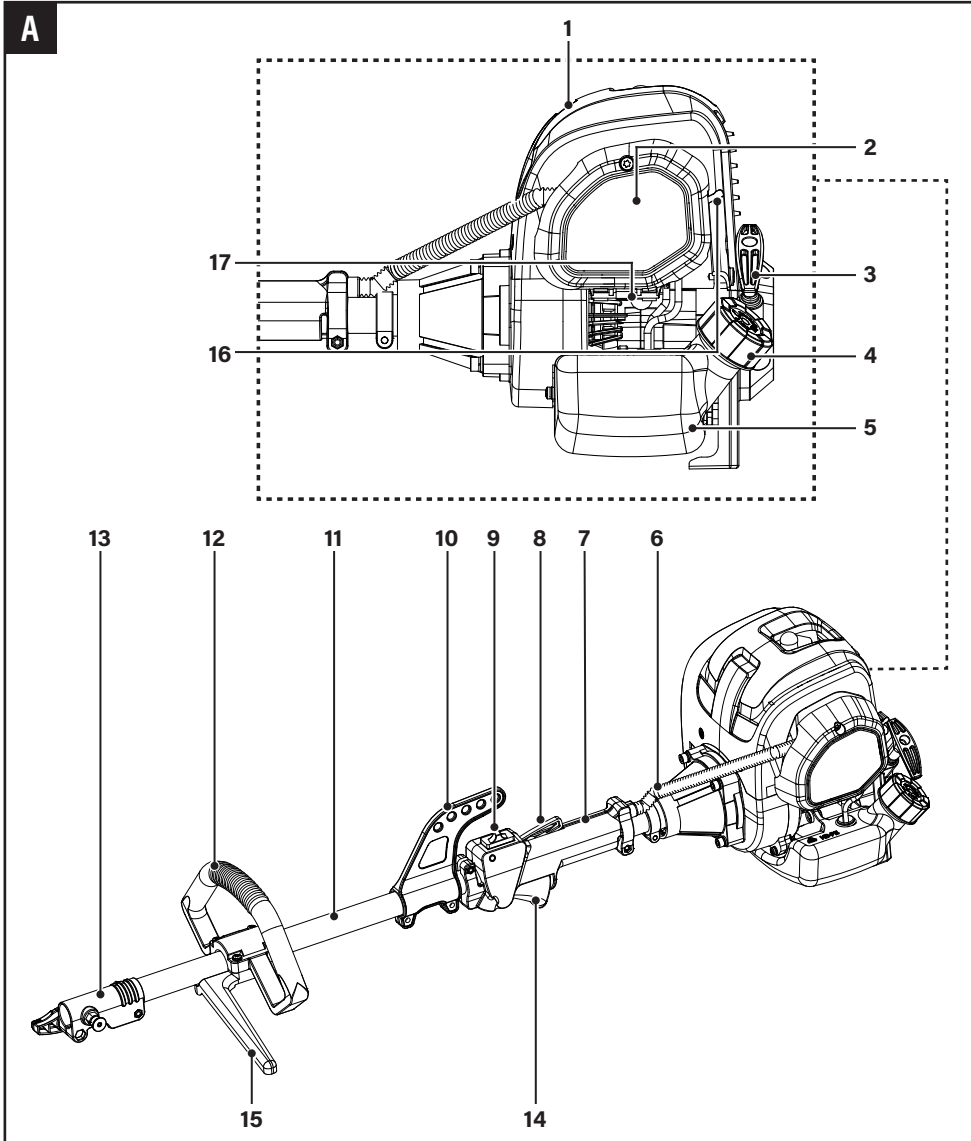
Max. cutting length of the cutter blades in mm.



Max. cutting capacity of the cutter blades in mm.

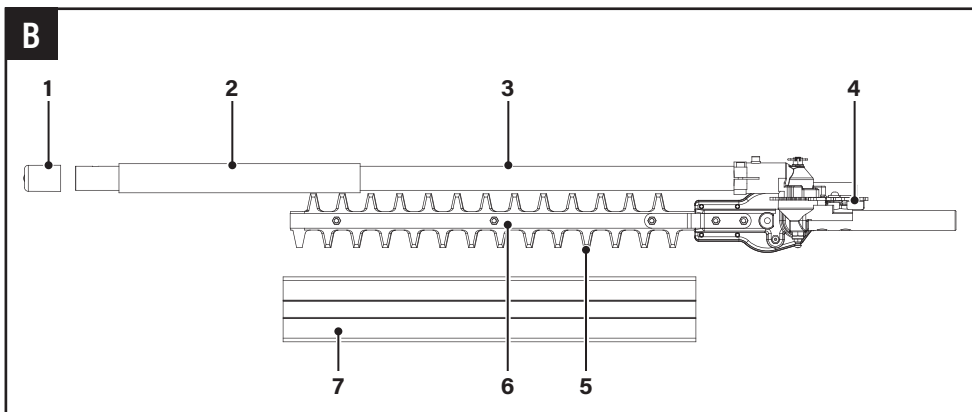
PRODUCT OVERVIEW

MAIN UNIT



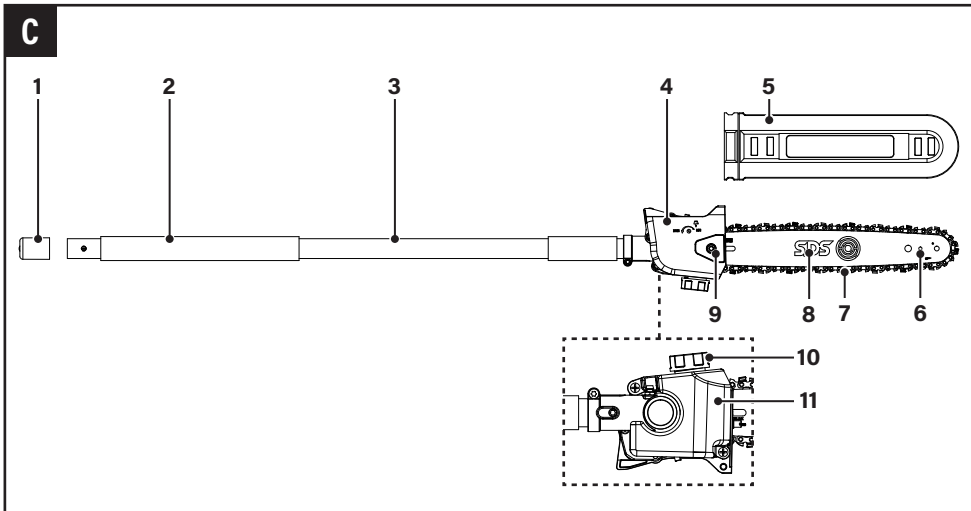
- A1 Power unit with spark plug
- A2 Air filter case
- A3 Recoil starter handle
- A4 Fuel tank cap
- A5 Fuel tank
- A6 Throttle cable
- A7 Rear handle
- A8 Throttle control
- A9 On/off switch
- A10 Harness suspension point
- A11 Main shaft tube
- A12 Front handle
- A13 Split shaft connector
- A14 Throttle trigger
- A15 Barrier bar
- A16 Choke
- A17 Primer

HEDGE TRIMMER ATTACHMENT



- B1 Protection cap
- B2 Hand-grip
- B3 Shaft tube
- B4 Locking levers
- B5 Cutter blade
- B6 Cutting device
- B7 Transport guard

POLE PRUNER ATTACHMENT



C1 Protection cap

C2 Hand-grip

C3 Shaft tube

C4 Clutch cover

C5 Guide bar cover

C6 Lubrication hole

C7 Saw chain

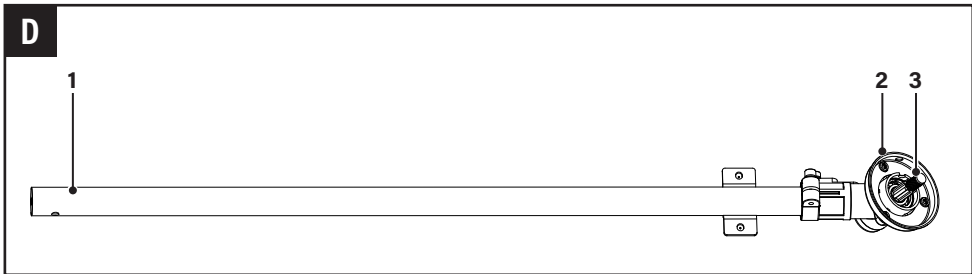
C8 Guide bar

C9 Fixing nut

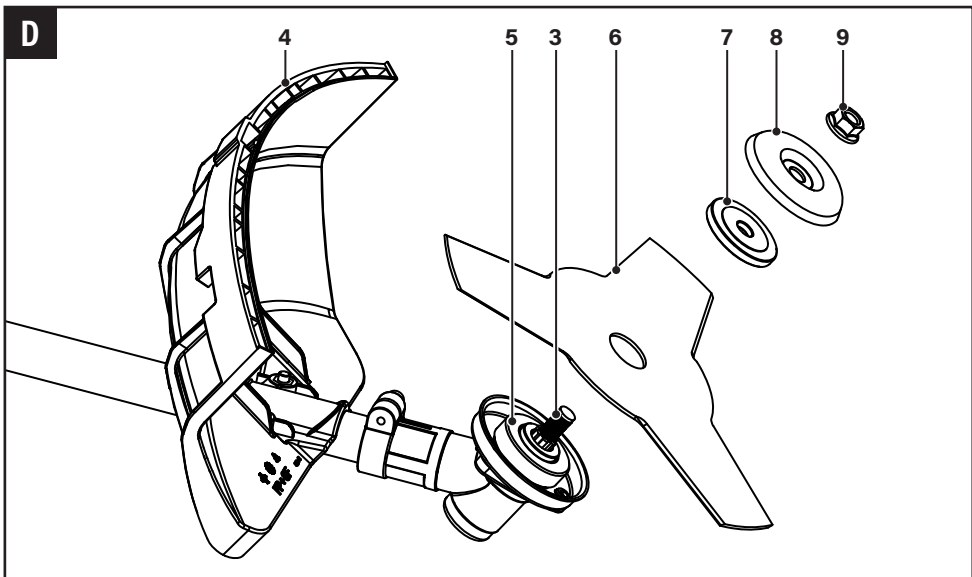
C10 Oil filler cap

C11 Oil tank

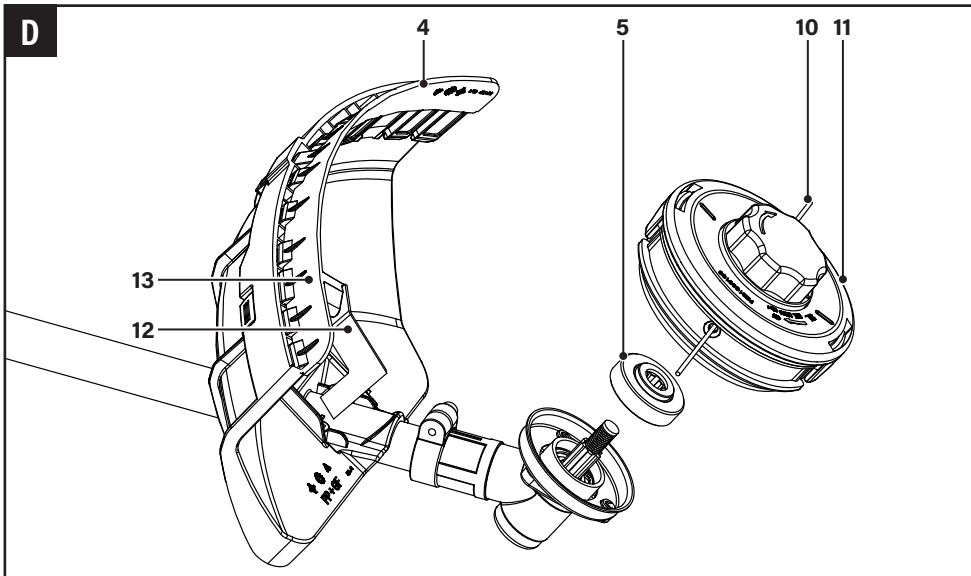
BRUSH CUTTER/GRASS TRIMMER



Brush Cutter



Grass Trimmer



D1 Shaft tube

D2 Gear head

D3 Spindle

D4 Cutting-attachment guard

D5 Backing flange

D6 Tri-arc cutting blade

D7 Locking flange

D8 Front flange

D9 Securing nut

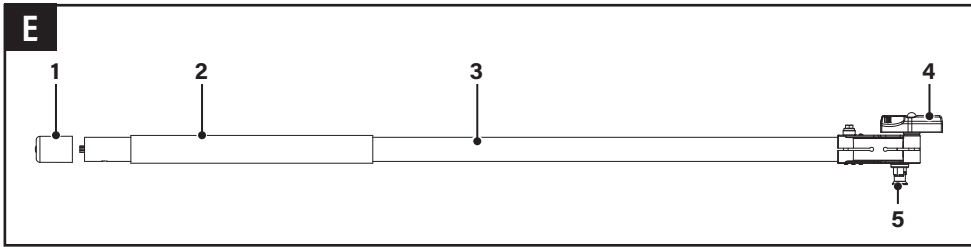
D10 Cutting line

D11 String trimmer head

D12 Cutting line cutter

D13 Trimming guard

EXTENSION ATTACHMENT



E1 Protection cap

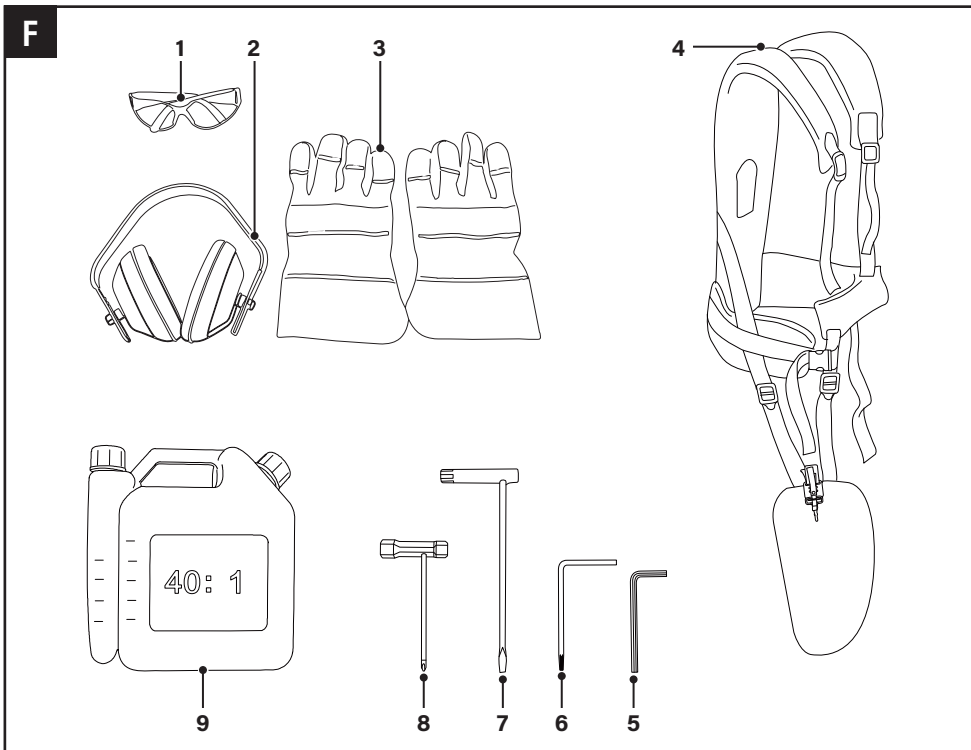
E4 Locking nut

E2 Hand-grip

E5 Locking knob

E3 Shaft tube

ACCESSORIES



F1 Safety goggles

F2 Ear protection

F3 Safety gloves

F4 Harness

F5 Hex key

F6 Multi-tool 1

F7 Multi-tool 2 (slot type screwdriver/
socket wrench)

F8 Multi-tool 3 (cross-head screwdriver/round
rod)

F9 Fuel mixing bottle

ASSEMBLY

YOU WILL NEED

(items not supplied)

- Suitable personal protective equipment
- Sharpening set
- Fuel funnel with filter
- Suitable top quality synthetic oil specifically for two-stroke engines, of JASO FC minimum specification.
- Suitable fuel (octane rating of at least 90, unleaded, maximum 10 % renewable ethanol (E10 or below))
- Container to collect fuel
- Lubricating gun and lubricant for cutting device
- First aid kit
- Dry powder fire extinguisher readily available
- Soft absorbent cloth (for fuel spills)

UNPACKING



WARNING! Before using the machine, familiarise yourself with the operating features, read the entire instruction manual, paying particular attention to the safety rules and operating instructions.

1. Unpack all parts and lay them on a flat, stable surface.
2. Make sure the delivery contents are complete and free of any damage. If you find that parts are missing or show damage, do not use the product but contact the customer service. Using an incomplete or damaged product represents a hazard to people and property.
3. Ensure that you have all the accessories and tools needed for assembly and operation. This also includes proper personal protective equipment.



WARNING! Switch off the machine and wait until the engine stops completely before assembly and adjustment.



WARNING! The machine must be fully assembled before operation.
Do not use a machine that is only partly assembled or assembled with damaged parts. Follow the assembly instructions step-by-step and use the pictures provided as a visual guide to assemble the machine easily.
Disconnect the spark plug (A1) before assembly. Reconnect it after assembly (see "Maintenance").



NOTICE! Take care of small parts that are removed during assembly or when making adjustments. Keep them secure to avoid loss.

ASSEMBLING THE FRONT HANDLE AND BARRIER BAR

1. Loosen the 4 pre-assembled bolts on the front handle (A12) using the multi-tool 1 (F6).
2. Separate the front handle (A12) and the rubber damper from the barrier bar (A15).
3. Attach the rubber damper to the main shaft tube (A11).
4. Clamp the front handle (A12) and the barrier bar (A15) onto rubber damper.
5. Secure the front handle (A12) and the barrier bar (A15) with the 4 bolts using the multi-tool 1 (F6) (Fig. 1).

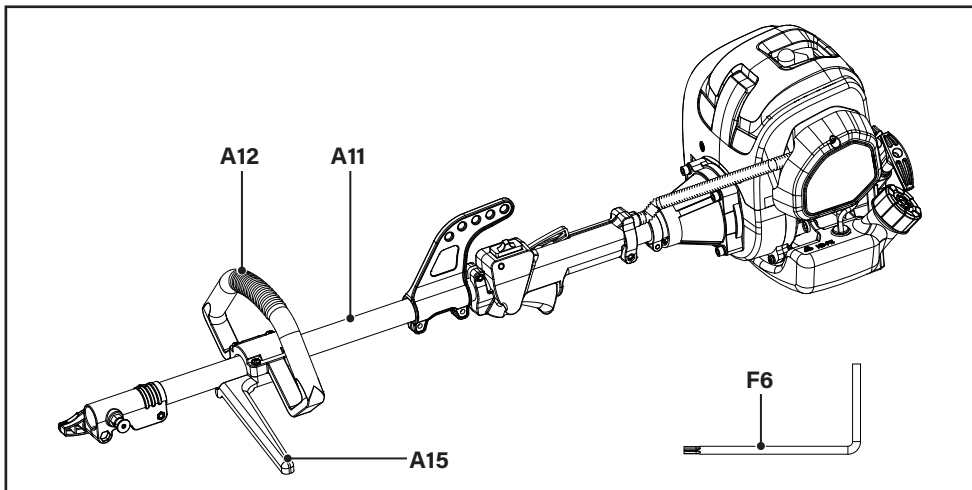


Fig. 1

ASSEMBLING THE POLE PRUNER ATTACHMENT



CAUTION! Risk of cuts! The teeth of the saw chain (C7) are very sharp! The protective gloves (F3) must be worn for all work on the saw chain.

1. Unscrew the fixing nut (C9) using the multi-tool 3 (F7).
2. Remove the fixing nut together with the clutch cover (C4) (Fig. 2).

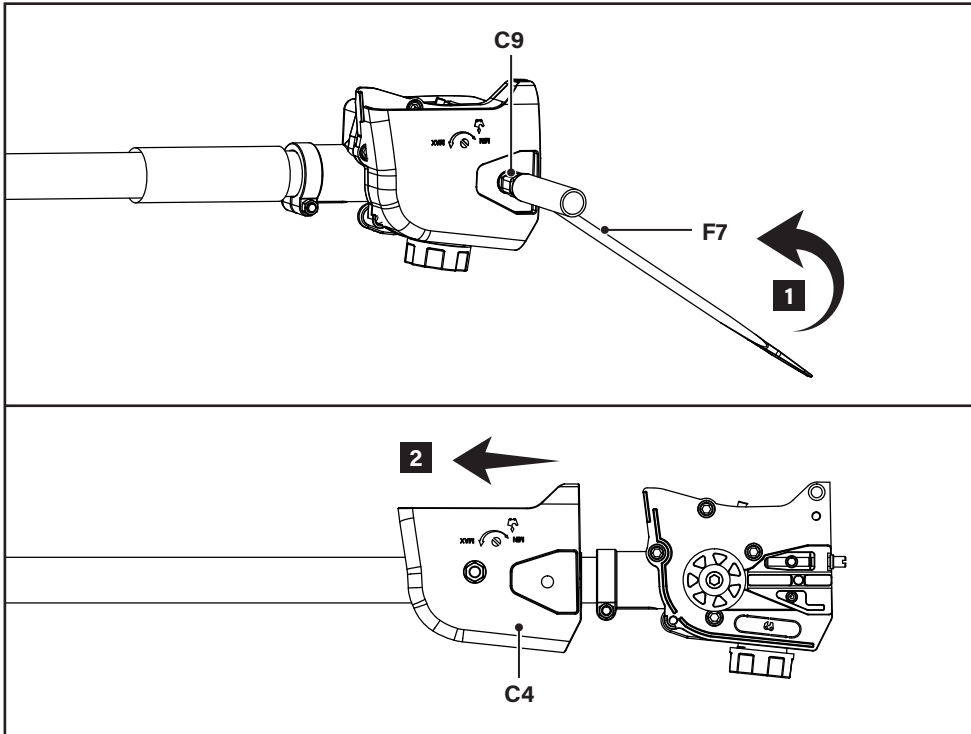


Fig. 2

- Identify the correct saw chain direction. Start to wrap the saw chain (C7) around the guide bar (C8) (Fig. 3).

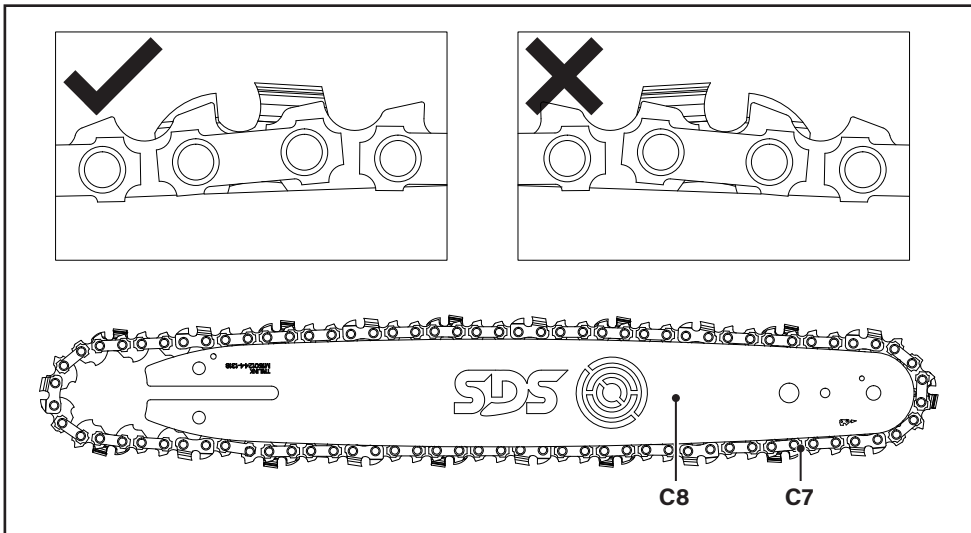


Fig. 3

- Poise the guide bar (C8) near the drive sprocket to fit the rest of the saw chain (C7) around the drive sprocket (Fig. 4).
- With the saw chain (C7) fitted around the drive sprocket and the guide bar (C8), carefully place the guide bar on the chain tension pin (Fig. 4).

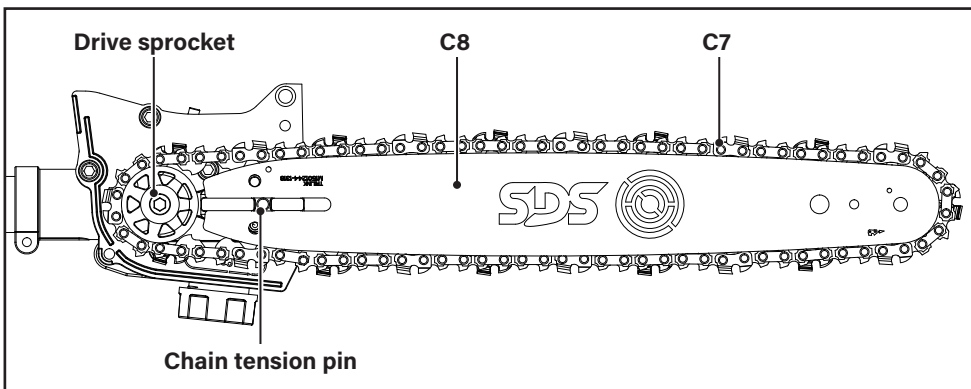


Fig. 4

6. Refit the clutch cover (C4) and tighten the fixing nut (C9) using the multi-tool (F7).



WARNING! Disconnect the spark plug (A1) before adjusting the tension of the saw chain (C7).



WARNING! Always maintain proper tension of the saw chain (C7). A loose chain increases the risk of kickback! A loose chain may jump out of the guide bar groove. This may injure the operator and damage the saw chain. A loose chain causes rapid wear to the chain, guide bar and the drive sprocket. Tensioning the saw chain too tightly overloads the engine and causes damage, insufficient tension can cause chain derailing, whereas a correctly tightened saw chain provides the best cutting characteristics and prolonged working life. The saw chain life mainly depends upon sufficient lubrication and correct tensioning.



NOTICE! Always check the tension of the saw chain (C7) before use, after the first cuts and regularly during use, approximately every 5 cuts. Upon initial operation, new chains can lengthen considerably. This is normal during the break-in period and the interval between future adjustments will lengthen quickly.

8. Using the multi-tool (F7), rotate the tension screw in clockwise direction to increase the tension on the saw chain (C7) or in anti-clockwise direction to decrease the tension on the saw chain (Fig. 5).

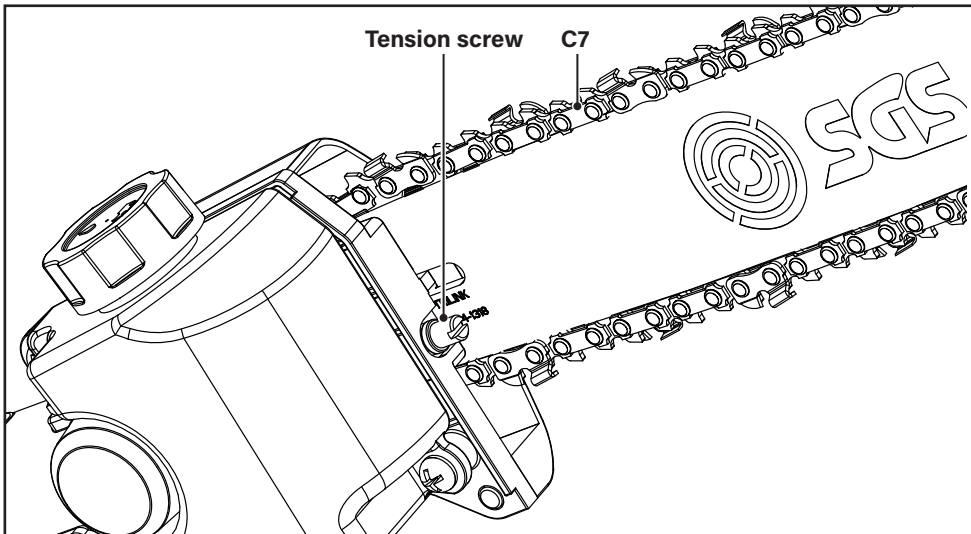


Fig. 5

- Pull the saw chain (C7) along the top of the guide bar (C8) by hand from one end to the other, several times. The chain should feel tight but still move freely. It should be possible to lift up the saw chain 3-4 mm from the guide bar (Fig. 6).

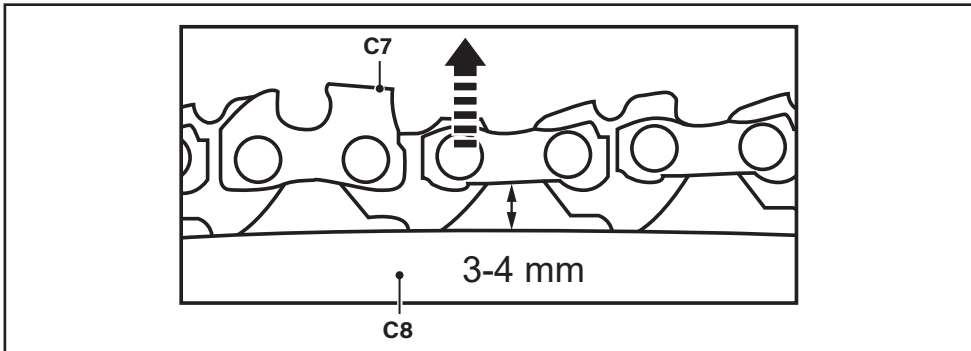


Fig. 6



WARNING! The machine is not filled with chain oil. It is essential to fill the machine with chain oil before using it. Never operate the machine without chain oil as this will result in extensive damage to the machine. Operating the saw chain (C7) dry or with too little chain oil will decrease cutting efficiency, shorten the machine life span and cause rapid wear to the saw chain and guide bar (C8) from overheating. Insufficient chain oil is evident by smoke or bar discolouration. Adequate lubrication of the saw chain during cutting operations is essential to minimise friction with the guide bar.

- Place the machine on a stable, level surface with the oil filler cap (C10) facing upwards. We recommend laying a non-flammable sheet under the attachment.
- Unscrew the oil filler cap (C10).
- Fill suitable saw chain oil into the oil tank (C11) using a funnel fitted with a filter to avoid debris entering the tank. Leave approximately 5 mm of space between the top of the saw chain oil and the inside edge of the tank to allow for expansion. Do not overfill.



NOTICE! Towards the end of the season, it is advisable to put only as much lubricant in the oil tank (C11) as you need for each cut, so that it is completely used up before you store the machine. Do not let the oil level drop below the **MIN** marking of the oil tank.



NOTICE! Always dispose of used saw chain oil and objects contaminated with them in accordance with local regulations.

- Wipe up spilled saw chain oil with a soft cloth and refit the oil filler cap (C10).

ASSEMBLING THE GRASS TRIMMER



NOTICE! The string trimmer head (D11) is used together with both the cutting-attachment guard (D4) and the trimming guard (D13). Use the string trimmer head for cutting smaller types of weed, lawn grass or similar soft vegetation.

1. Use the hex key (F5) to loosen the 2 pre-assembled bolts on the cutting-attachment guard (D4).
2. Attach the cutting-attachment guard (D4) with the trimming guard (D13) onto the plate on the shaft tube (D1). Use the hex key (F5) to secure the parts with the 2 bolts (Fig. 7).

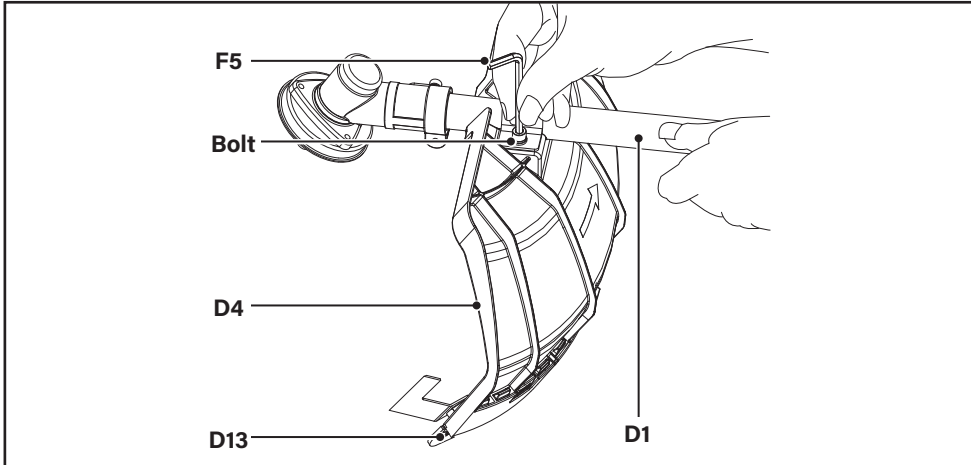


Fig. 7

3. Rotate the backing flange (D5) until its hole aligns with the one on the gear head (D2).
4. Insert the multi-tool 1 (F6) into the hole to lock the rotation of the backing flange (D5) (Fig. 8, step 1).
5. Use the multi-tool 3 (F8) to loosen the securing nut (D9) by turning it in clockwise direction.
6. Remove the securing nut (D9), the front flange (D8) and the locking flange (D7) from the gear head (D2) (Fig. 8, step 1).

7. Rotate the string trimmer head (D11) onto the spindle (D3) in anti-clockwise direction (Fig. 8, step 2).

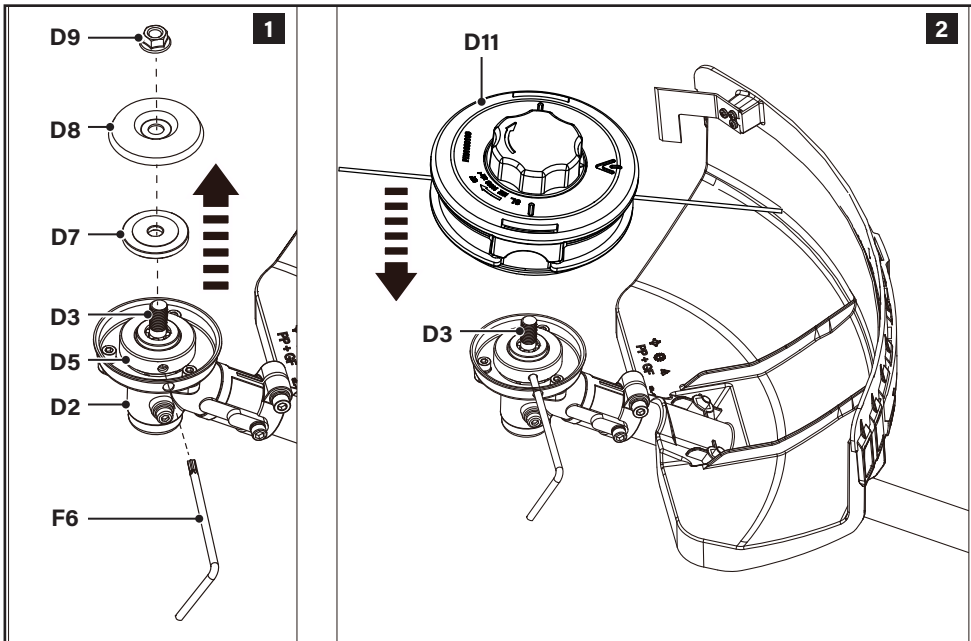


Fig. 8

8. Make sure the string trimmer head (D11) is firmly tightened and remove the multi-tool 1 (F6).

ASSEMBLING THE BRUSH CUTTER



NOTICE! The tri-arc cutting blade (D6) is used together with the cutting-attachment guard (D4) only. Use the tri-arc cutting blade for cutting heavier weeds, brush and similar vegetation.

1. Press the locking tabs on both sides and pull to detach both ends of the trimming guard (D13) from the cutting-attachment guard (D4) (Fig. 9, step 1, 2).
2. Insert the multi-tool 1 (F6) under the center buckle to disengage it and remove the multi-tool 1 (Fig. 9, step 3).

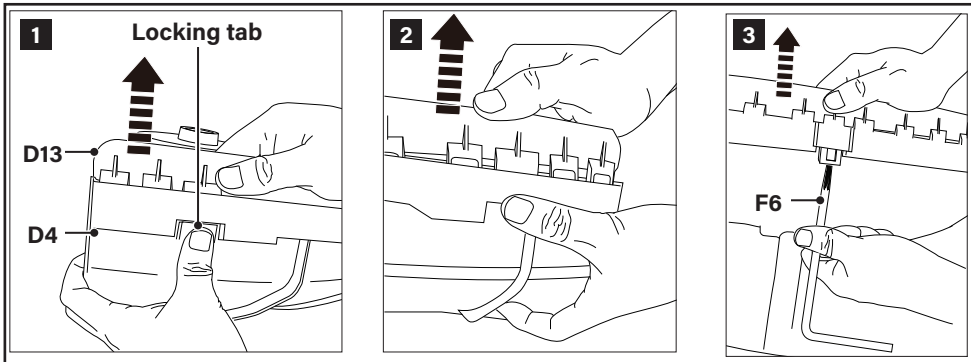


Fig. 9

3. Remove the trimming guard (D13) completely.
4. Use the hex key (F5) to loosen the 2 pre-assembled bolts on the cutting-attachment guard (D4).
5. Attach the cutting-attachment guard (D4) onto the plate on the shaft tube (D1). Use the hex key (F5) to secure the parts with the 2 bolts.
6. Rotate the backing flange (D5) until its hole aligns with the one on the gear head (D2).
7. Insert the multi-tool 1 (F6) into the hole to lock the rotation of the backing flange (D5) (Fig. 10, step 1).
8. Use the multi-tool 3 (F8) to loosen the securing nut (D9) by turning it clockwise (Fig. 10, step 1).
9. Remove the securing nut (D9), the front flange (D8) and the locking flange (D7) from the gear head (D2) (Fig. 10, step 1).
10. Place the tri-arc cutting blade (D6) onto the spindle (D3). The side with markings should be facing towards the gear head (D2) (Fig. 10, step 2).

11. Place the locking flange (D7), front flange (D8) and then the securing nut (D9) onto the spindle (D3). Use the multi-tool 3 (F8) to tighten the securing nut in anticlockwise direction to secure the parts in place 1 (Fig. 10, step 2).

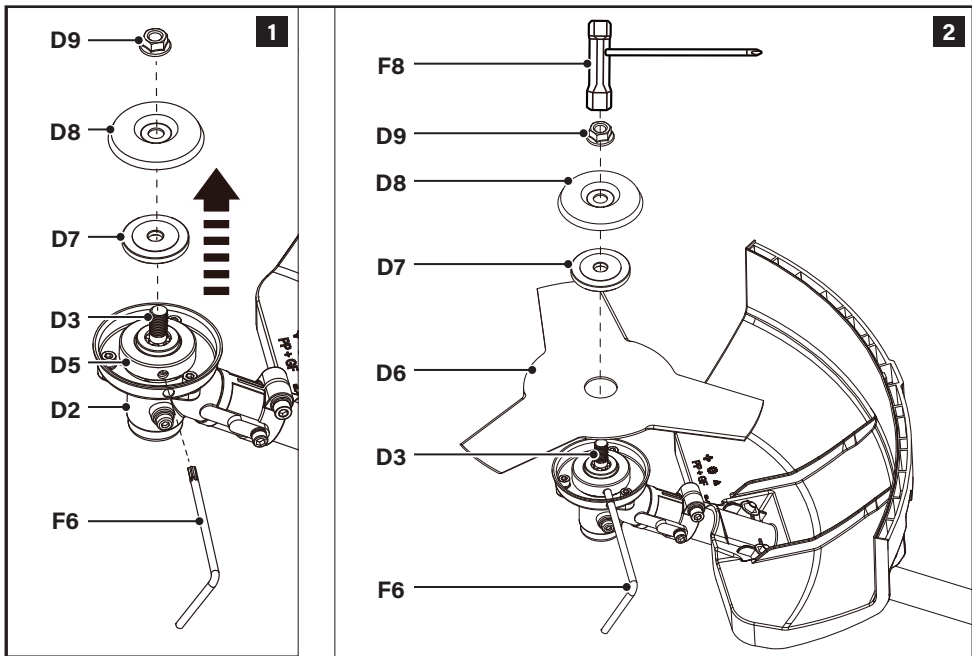


Fig. 9

12. Make sure the tri-arc cutting blade (D6) is firmly tightened and remove the multi-tool 1 (F6).
13. Remove the transport guard from the tri-arc cutting blade (D6) before operation.

ASSEMBLING THE ATTACHMENT TO THE MAIN SHAFT TUBE



NOTICE! The extension shaft can only be used with the pole pruner to allow for longer reach.

1. Remove the protective cap (B1/ C1/ E1) from the attachment to be used.
2. Pull out and rotate the locking knob on the split shaft connector (A13) in anticlockwise direction to stop at the bracket. Insert the shaft tube (B3/ C3/ D1/ E3) of the attachment into the main shaft tube (A11) (Fig. 10).

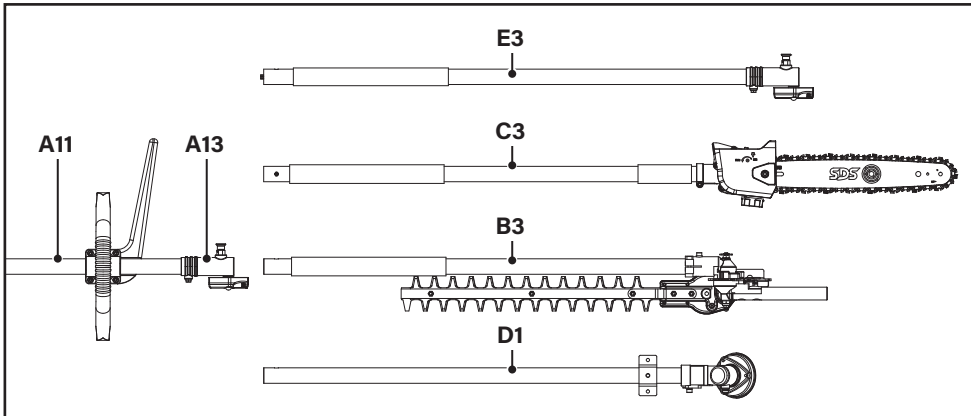


Fig. 10

3. Release the locking knob by turning in clockwise direction. Rotate and slide the split shaft connector (A13) inward until the locking knob snaps into place.
4. Tighten the locking nut to secure the connection of the tubes.

FILLING UP FUEL AND OIL



WARNING! This machine is not supplied with petrol-oil mixture in the engine. Before operating this machine it is essential to fill it with petrol-oil mixture. Observe the technical specifications for suitable fuel and engine oil.



WARNING! Fuel and oil are highly inflammable! Fumes will explode if lit. Ensure that there are no naked flames around the machine. Do not smoke while filling fuel and oil.



CAUTION! Risk of machine damage. Never mix fuel and oil directly in the fuel tank (A5).



NOTICE! To avoid spillage and to filter out debris, use a funnel with filter to fill the fuel mixing bottle (F9) and the fuel tank (A5).



NOTICE! For Optimum Performance E5 Petrol is highly recommended. If you are using E10 Petrol, fuel stabilisers or enhancers are required for use to prolong the life of the fuel and to protect the machine.






NOTICE! Fuel and oil deteriorate over time. It may be difficult to start the engine if you use fuel which has been kept for more than 30 days. Towards the end of the season, it is advisable to put only as much fuel in the tank as you need for each use, since it should be completely used up before storing the machine. Empty remaining fuel from the fuel tank (A5) after each use.

1. Place the machine on a stable, level surface with the fuel tank cap (A4) facing upwards. We recommend laying a non-flammable sheet under the machine.
2. Pour a regular-grade unleaded petrol and a quality engine oil for air cooled 2-stroke engines in the supplied fuel mixing bottle (F9) respectively via the 2 openings. Use the scale markings on different sides for the desired ratio for petrol:oil.

Example: Fill petrol to scale marking "10" first, and then fill 2-stroke oil to scale marking "10".

This indicates a correct ratio of 40:1 when using the scale 40:1.

		=	
100 ml	2.5 ml	=	40:1
200 ml	5 ml	=	
300 ml	7.5 ml	=	
400 ml	10 ml	=	

3. Tilt and shake the fuel mixing bottle (F9) thoroughly to mix the fuel.

4. Unscrew the fuel tank cap (A4) (Fig. 11).

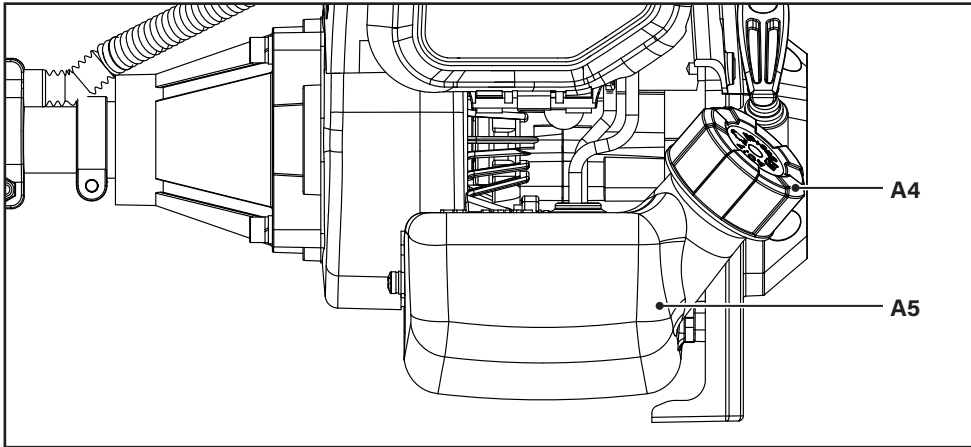


Fig. 11

5. Fill the fuel into the fuel tank (A5). Leave approximately 5 mm of space between the top of the fuel and the inside edge of the tank to allow for expansion. Do not overfill.

6. Wipe up spilled fuel with a soft absorbent cloth. Refit and screw the fuel tank cap (A4) firmly.

OPERATION

INTENDED USE

This machine is intended to be used as:

- **Brush cutter:** With the tri-arc cutting blade and cutting-attachment guard attached, the machine is intended to cut heavier weeds, brush and similar vegetation.
- **Grass trimmer:** With the string trimmer head, cutting attachment guard and trimming guard attached, the machine is intended to cut smaller types of weed, lawn grass or similar soft vegetation.
- **Hedge trimmer:** With the hedge trimmer attachment attached, the machine is intended to trim wide and high hedges, bushes and shrubs.
- **Pole pruner:** With the pole pruner attachment attached, the machine is intended to cut branches.



WARNING! The machine must be used by an experienced operator* having read and understood the safety requirements provided within this operating manual using appropriate personal protective equipment (PPE).

- This machine must not be used for cutting other materials, such as plastic, stone, metal, wood that contains foreign objects, or materials that are harmful to health.
- This machine should not be used for cutting unusually thick grass or vegetation, wet grass, or shredding leaves. The brush cutter should not be used to level ground elevations for example molehills.
- For safety reasons it is essential to read the entire operating manual before first operation and to observe all the instructions therein.
- This machine is intended for private domestic use only, not for any commercial trade use. It must not be used for any purposes other than those described.

OPERATING CONTROLS

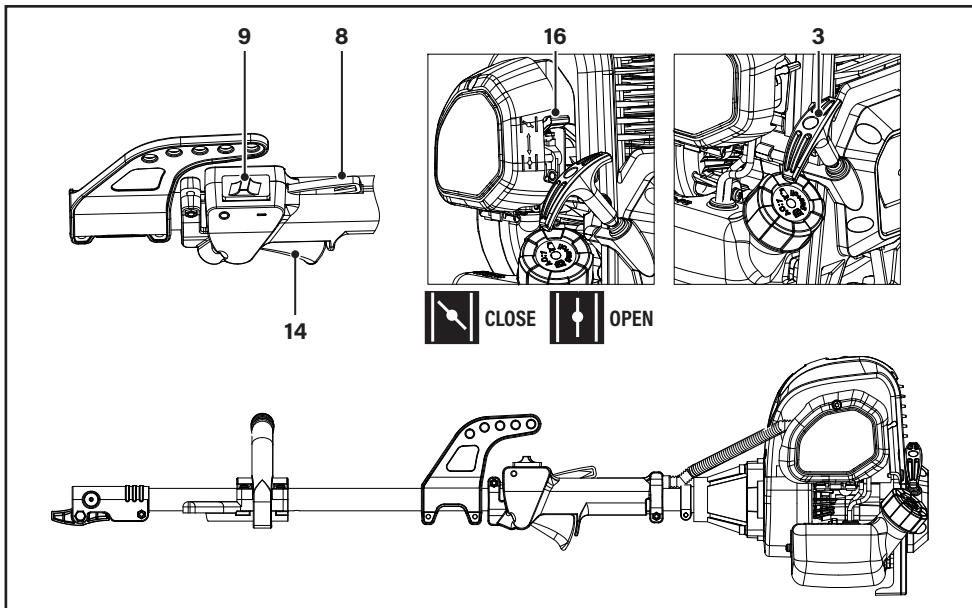


Fig. 12

* A trained operator is a person who has the competence and knowledge in the use and hazards associated with using a machine as well as the precautions to be taken to limit these hazards.

SAFETY EQUIPMENT



NOTICE! The machine has several pieces of safety equipment which reduce the risk of injury when working.

Cutting-attachment and trimming guard

- The guards (D4/ D13) protect the operator against thrown objects during operation.
- Use the grass trimmer only together with the trimming guard (D13) and cutting-attachment guard (D4).
- Use the brush cutter only together with the cutting-attachment guard (D4).
- The cutting line cutter (D12) is integrated with the trimming guard (D13) and shortens the cutting line to the necessary length.
- Never use the machine without a guard (D4/ D13) or with a defective guard.

Harness



NOTICE! The harness (F4) improves working movement and enables the operator to manage the job in a safer way and takes the strain away from the body. Always wear the harness when working with the machine. Always turn the machine off and wait until the attachment tool stops completely before taking off the harness.

1. Place the harness (F4) over your shoulders. Pull the straps to fasten and tighten the waist belt.
2. Clip the harness (F4) to the harness suspension point (A10) on the main shaft tube (A11).
3. Adjust the length of the harness (F4) so that the weight of the machine is balanced and the cutting attachment is approximately 10–15 cm above the ground (Fig. 13).

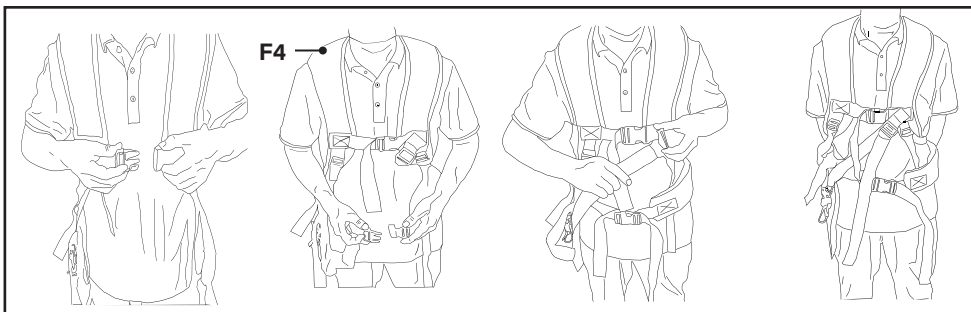


Fig. 13

Barrier bar

- The barrier bar (A15) is intended to maintain a minimum distance at the machine's side from an obstruction or a wall. Always assemble the front handle (A12) with the barrier bar to the machine.

Throttle trigger lockout



WARNING! Risk of injury! The machine must only be put into operation if no faults are found. If any safety equipment is defective, it must be replaced/fixed before the next use.

- The throttle control (A8) prevents unintentional start of the throttle trigger (A14). The throttle trigger can only be activated if the throttle trigger lockout is pressed.

CHECK BEFORE STARTING

1. Check the machine, as well as accessories for damage before each use. Do not use the machine if it is damaged or shows wear.
2. Double check that accessories and the attachment are properly fixed.
3. Check the fuel level, refill if necessary.
4. Always hold the machine by its handles. Keep the handles dry and clean to ensure proper grip.
5. Ensure that the ventilation openings are unobstructed and clear. Clean them if necessary with a soft brush. Blocked ventilation openings may lead to overheating and damage the machine.
6. Wear correct personal protection equipment to protect yourself from hidden objects that may be thrown from the cutting attachments.
7. Ensure the area to be worked is clear of stones, sticks, wires, electrical lines etc. or other objects that could damage the tool.
8. Stop the engine immediately if you are disturbed while working by other people entering the working area. Always let the machine come to complete stop before putting it down.
9. Do not overwork yourself. Take regular breaks to ensure you can concentrate on the work and have full control over the machine.
10. Understand the purpose and use of all safety equipment, including the harness (F4).



NOTICE! In some countries regulations define at what time of the day and on what special days machines are allowed to be used and what restrictions apply. Ask your community for detailed information and observe the regulations in order to preserve a peaceful neighbourhood and avoid committing administrative offenses.

STARTING THE ENGINE



DANGER! Risk of fire! Due to any spilled fuel, the machine can catch fire.

- Wipe any spilled fuel up before starting using a soft absorbent cloth.
- Start the engine a few metres away from the place where you have filled it.





NOTICE! Risk of machine damage! Never twist the starter cord around your hand. Only pull on the recoil starter handle (A3). Do not suddenly release the recoil starter handle. Allow the rope to return slowly and in a controlled manner each time it is pulled.




NOTICE! If the engine does not start, the engine may be flooded. Flooding is caused by too much fuel mixture applied at the wrong time and can prevent a machine from starting. Follow below procedure:

1. Remove the spark plug (A1) and dry the spark plug.
2. Pull the recoil starter handle (A3) slowly for several times to drain the fuel from the combustion chamber.
3. Wait until fuel vapours and refit the spark plug (A1).
4. Clean up any spilled fuel and move the machine at least 3 m away before starting the engine, to avoid any accidental fire.
5. Wait for the engine to cool down then cold start or warm start the machine as described.

STARTING THE MACHINE WITH A COLD ENGINE

1. Place the machine on a flat and stable surface. The attachment should not touch the ground or any objects.
2. Set the on/off switch (A9) to **ON** position.
3. Set the choke (A16) to **CLOSE**  position.
4. Press the primer (A17) 6 times until the bubble is filled with fuel.
5. Hold the machine securely to the ground with your left hand. Pull the recoil starter handle (A3) slowly with your right hand until you feel a definite resistance and then give it a brisk, strong pull. Repeat until the engine starts but no more than 4 times.
6. Set the choke (A16) to **OPEN**  position.
7. Pull the recoil starter handle (A3) slowly with your right hand until you feel a definite resistance and then give it a brisk, strong pull. Repeat until the engine starts.
8. Let the machine run in idle for 1-2 minutes to let it warm up.

STARTING THE MACHINE WITH A WARM ENGINE

1. Place the machine on a flat and stable surface. The attachment should not touch the ground or any objects.
2. Set the on/off switch (A9) to **ON** position.
3. Set the choke (A16) to **OPEN**  position.
4. Hold the machine securely to the ground with your left hand. Pull the recoil starter handle (A3) slowly with your right hand until you feel a definite resistance and then give it a brisk, strong pull. Repeat until the engine starts.

AFTER STARTING THE ENGINE

1. Press the throttle trigger control (A8) and then slowly press the throttle trigger (A14) to increase the engine speed.
2. Check if the machine stops rotating when you release the throttle trigger (A14).
3. Once the engine is running smoothly, carefully lift the machine.



WARNING! Always carry the machine by using the harness (F4) attached to the machine. Do not carry the machine only with hands.

STOPPING THE ENGINE



WARNING! The machine continues to work for some time even after the engine has been stopped. Wait until the cutting device comes to a complete stop before you put the machine down.

1. Release the throttle trigger (A14) and the throttle control (A8), and let the machine run in idle for a while.
2. Set on/off switch (A9) to **STOP**.
3. Let the machine cool down completely.

USING THE BRUSH CUTTER AND GRASS TRIMMER

- The string trimmer head (D11) is equipped with a bumper to help to feed the cutting line (D10).
- Tap the bumper on a firm ground while the machine is operating, the spool releases a fresh trimming line.
- A cutting line cutter (D12) is integrated with the trimming guard (D13) and it cuts the line to a preset length (Fig. 14).

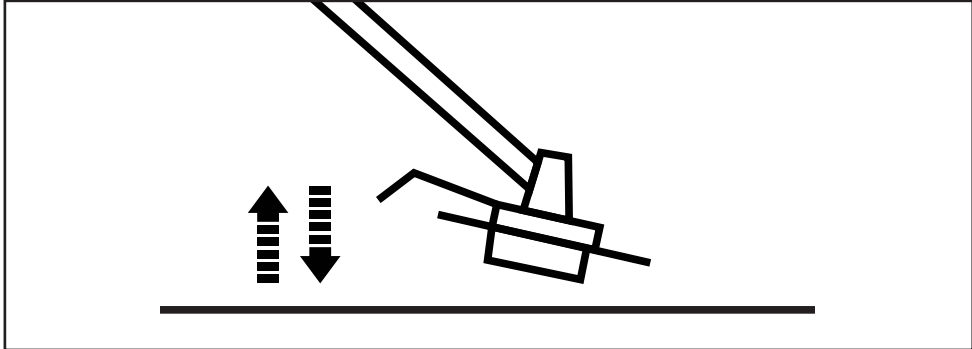


Fig. 14

Cutting/trimming tips



WARNING! Avoid contacting the cutting blade with stones, wire, glass, etc. that may cause injury to the operator. Inspect the cutting blade regularly for damage, cracks or breaks.



WARNING! When working with the cutting blade, there is always a risk of kickback if the cutting head comes into contact with a hard object. Kickback will cause the sudden stalling of the cutting head, which in turn results in the cutting head being forced in the opposite direction to the rotation of the cutting blade. Ensure that you retain a firm grip with both hands. In an event of a kickback retain a firm stance to avoid injuries.

- Always hold the machine firmly with both hands on the front handle (A12) and rear handle (A7). Never operate this machine using only one hand.
- Maintain a firm grip with your thumbs and fingers encircling the handle (A7/ A12). A firm grip helps to reduce 'kickback' and maintain control of the machine.
- Stand upright, do not lean forward and pay attention to the posture. Keep both feet apart to help retain body balance.
- Carefully plunge the cutting attachment from above when cutting long undergrowth.
- Move the cutting attachment towards the base of young trees or thicker vegetation.

- Do not lift the cutting attachment higher than your knee. The higher you hold the cutting attachment, the higher the risk of objects being thrown (Fig. 15).

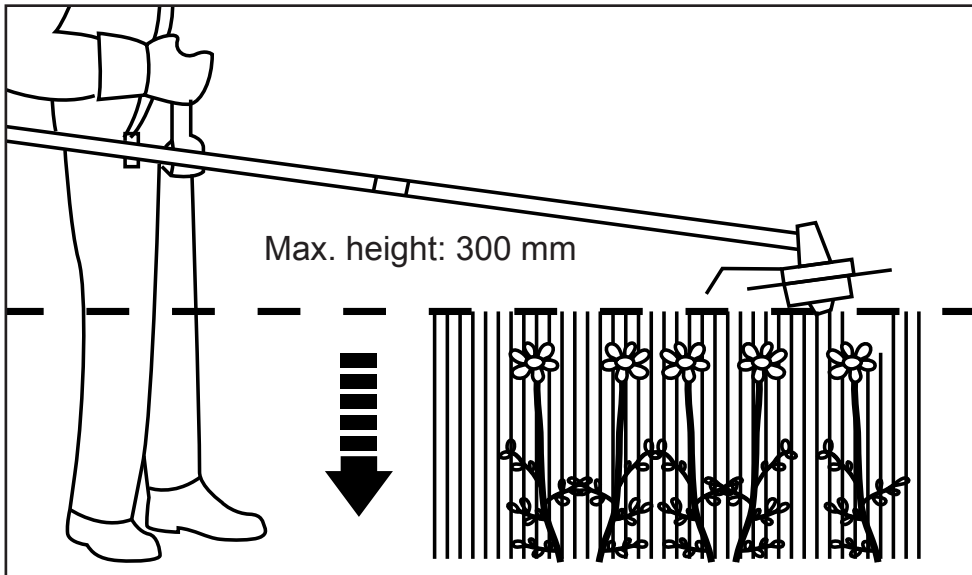


Fig. 15

- Avoid cutting tall grass in one cut. Trim taller grass in stages (Fig. 16).

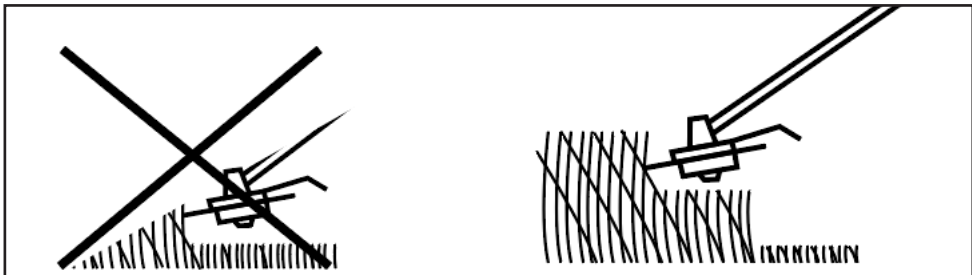


Fig. 16

- Hold the cutting attachment just above the ground at an angle of approximately 30° (Fig. 17).

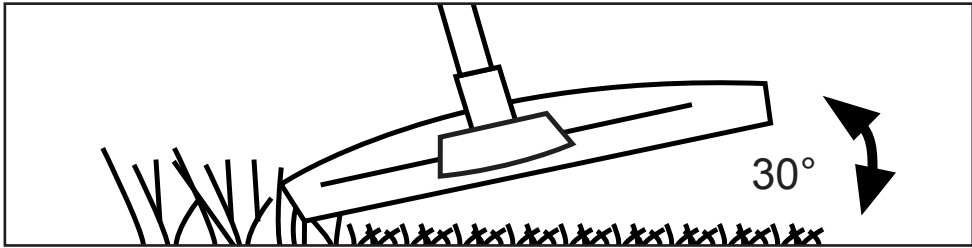


Fig. 17

- Move the machine with slow and regular motion from left to right before moving it back to the starting position and trimming the next area (Fig. 18).
- Pay special attention when performing the work close to trees and bushes (Fig. 18).

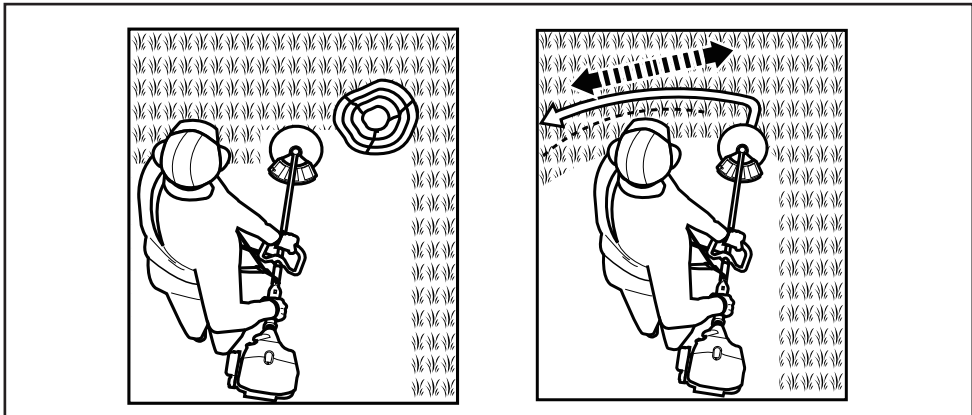


Fig. 18

- Ensure that the cutting attachment remains clean and free of off-cuts to avoid jamming. Make sure the on/off switch (A9) is set to **STOP** before checking the cutting attachment for defects.
- Avoid cutting wet grass as it tends to stick to the moving parts.

USING THE POLE PRUNER

Kickback



WARNING! Beware of kickback! Kickback can lead to dangerous loss of control of the machine and result in serious or fatal injury to the operator or anyone standing close by! Always be alert because rotational kickback and pinch kickback are major machine operational dangers and the leading cause of most accidents!

- Kickback is the sudden backward/upward motion of the machine, occurring when the chain (at the tip of the chain bar) comes in contact with a log or wood, or when the chain becomes jammed.
- When kickback occurs the machine reacts unpredictably and can cause severe injuries to the operator or bystanders.
- With a basic understanding of “kickback”, the element of surprise can be reduced or eliminated. Sudden surprise contributes to the majority of accidents.
- You should read all the safety warnings and user instructions carefully before attempting to operate this machine.

To avoid kickback:

- Never work with a loose, widely stretched or heavily worn chain.
- Always use a low kickback chain.
- Ensure correct chain tension.
- Only use replacement bars and chains specified in this handbook.
- Follow the sharpening and maintenance instructions for the saw chain. Decreasing the depth gauge height can lead to increased kickback.
- Never work with the tip of the guide bar.
- Saw with the guide bar at a flat angle.
- Always hold the machine firmly with both hands.

Pruning



WARNING! This machine has not been designed to provide protection from electric shock in the event of contact with overhead electric lines! Therefore do not use machine near cable, electric power or telephone lines. Keep a minimum distance of 15 m to all electric lines.

- Always hold the machine firmly with both hands on the front handle (A12) and rear handle (A7). Never operate this machine using only one hand (Fig. 18).
- Maintain a firm grip with your thumbs and fingers encircling the handles. A firm grip helps to reduce ‘kickback’ and maintain control of the machine.

- Always hold the machine at an angle of not more than 60° from the horizontal level. Otherwise safe operation is not possible (Fig. 18).



Fig. 18

- Never stand directly under the branches being cut. Objects may fall different than expected. Always position yourself out of the path of falling branches.
- Keep other persons away from cutting end of machine and at a safe distance from the work area. Maintain a minimum distance of 15 m to bystanders.
- Never climb into a tree to prune. Do not stand on ladders, platforms, logs, or in any position which may cause you to lose your balance or control of the machine. When pruning trees, it is important not to make the flush cut next to main limb or trunk until you have cut off the limb further out to reduce the weight. This prevents stripping the bark from the main member.
- Never stand on a ladder or other type of unstable support while using the machine. Insecure stand invites hazards.
- Use the machine only with secure footing. Hold the machine at the right-hand side of your body.
- Do not operate the machine with arms fully extended or attempt to cut areas which are difficult to reach.
- Keep a firm, steady pressure on the machine while working with it. Do not try to force the machine through the wood, let the cutting device do the work, using the gripping teeth to apply minimal leverage pressure.
- Beware when reaching the end of the cut. The weight of the machine may change unexpectedly as it cuts free from the wood. Accidents can occur to the legs and feet. Always remove the machine from a wood cut while it is running.
- The chain must be running at full speed before it comes into contact with the wood.

USING THE HEDGE TRIMMER

Adjusting the angle



NOTICE! Adjust the attachment angle to suit working conditions.

1. Press the locking levers (B4) with one hand and hold them in position (Fig. 19, step 1).
2. Move the shaft tube (B3) with the other hand until the desired angle is adjusted. The angle can be adjusted from -90° to $+60^{\circ}$ (Fig. 19, step 2).
3. Release the locking levers (B4) when the desired angle is adjusted. Ensure that the hook engages between two teeth of the tooth wheel (Fig. 19, step 3).

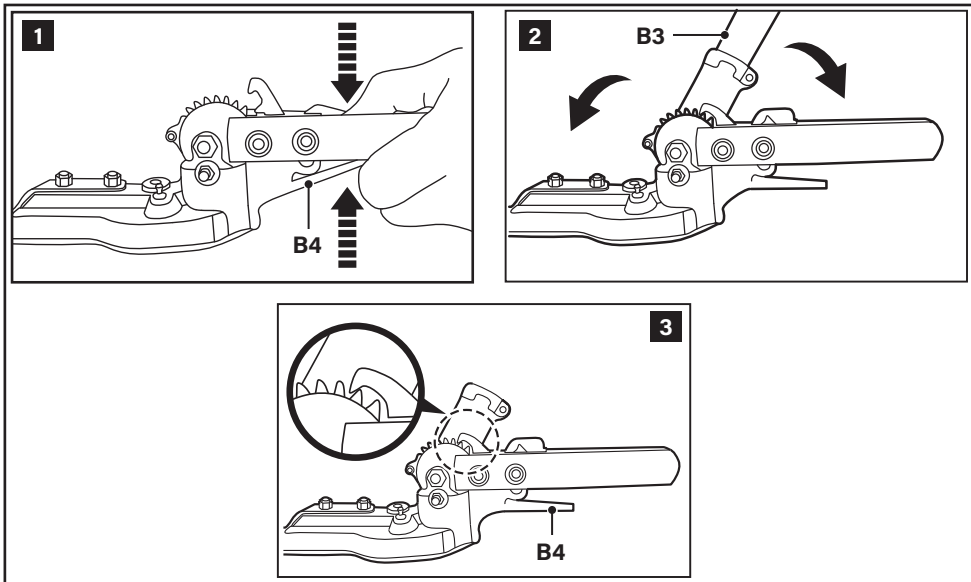


Fig. 19

Trimming

- Cut and remove branches exceeding the cutting capacity of this machine using a suitable pruner before operation.
- Always hold the machine firmly with both hands on the rear handle (A7) and hand grip (B2). Never operate this machine using only one hand.
- Cut both sides from the bottom cutting upwards to the top. This will prevent any of the cuttings falling into the path of the area still to be cut (Fig. 20).
- After cutting the sides proceed to the top.

- When cutting wide hedges with the cutting area in sight move the cutter blade lightly through the cutting surface in a sweeping motion following the shape of the hedge or shrub. A slight tilt downwards of the cutter blade in the direction of motion is recommended for optimum cutting performance (Fig. 20).

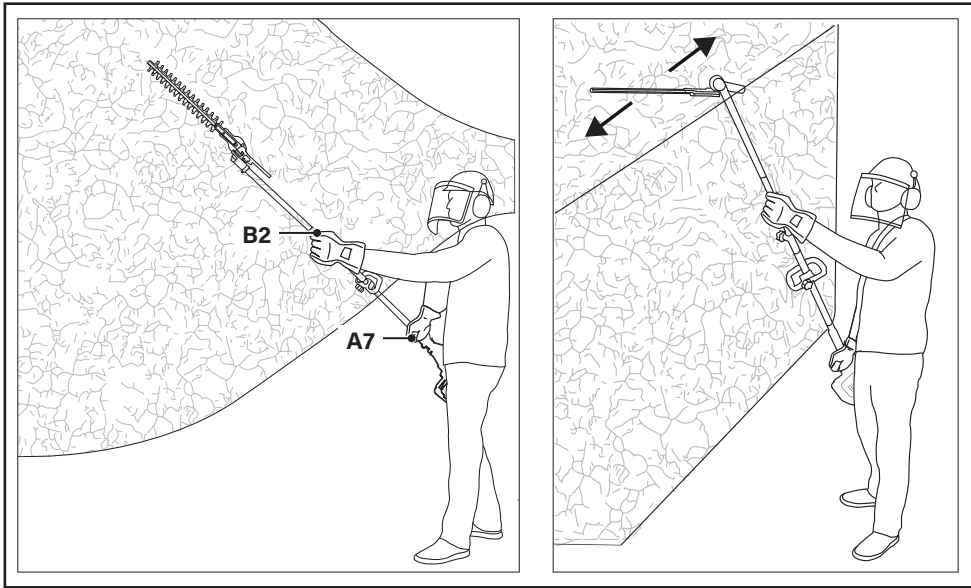


Fig. 20

- Move the machine with slow motion forward when cutting higher hedge and the cutting area out of sight.
- Do not to rush and do not attempt to cut too much with one stroke of the cutter blade.
- Cut in a number of stages if the area being cut is particularly long to achieve a better result; smaller cuttings will allow for easy composting.

CLEANING AND MAINTENANCE



DANGER! Proper maintenance is essential for safe and trouble free operation. Improper maintenance, or failure to address a problem instantly can cause a malfunction which can result in serious injury or even death.



WARNING! Only perform repairs and maintenance work according to these instructions. All other works must be performed by a qualified person.



WARNING! Always stop the engine, disconnect the spark plug (A1) and let the engine cool down before performing inspection, maintenance and cleaning work.



CAUTION! Do not use chemical, alkaline, abrasive or other aggressive detergents or disinfectants to clean this machine as they might be harmful to its surfaces.



CAUTION! Do not immerse the machine into water or any liquids.



NOTICE! Keep the machine clean. Remove debris after each use and before storage. Regular and proper cleaning helps to ensure safe operation and prolongs the life of the machine.



NOTICE! Inspect the machine before each use for worn and damaged parts. Do not operate it if you find broken and worn parts. Replace worn parts as necessary or contact an authorised service centre for repair before using the machine again.

CLEANING THE HOUSING

1. Use a damp, lint-free cloth to clean the housing.
2. Clean the ventilation openings located on the back and right-hand side of the engine with a soft brush. Clogged ventilation openings might cause the engine to overheat.
3. Wipe the surface with a dry cloth.

CLEANING THE ATTACHMENTS

1. Disassemble the attachment in reverse order from assembly.
2. Use compressed air (max. 3 bar) to remove dirt accumulated on the attachment.
3. Use a damp, lint-free cloth to clean the surface.
4. Wipe the surface with a dry cloth.

HEDGE TRIMMER

- Keep the cutting device (B6) clean and free of debris. Remove trimmings.
- Keep the cutter blade (B5) sharp to retain a good cutting performance. Replace a worn or damaged cutting device (B6) with a new one of the same type.
- Lubricate the cutting device (B6) after each use to prolong the life span of the machine. Apply light machine oil along the edge of the cutter blade (B5).
- Check it for any damage and protect it from corrosion. If necessary take the cutter blades (B5) to an authorized dealer for sharpening.
- Tighten loose nuts on the cutting device (B6) with a proper wrench to ensure safe operation.

POLE PRUNER

1. Disassemble the guide bar (C8) and saw chain (C7) in reversed order from assembly.
2. Check the oil dispenser for clogging and clean if necessary to ensure proper lubrication of the guide bar and saw chain during operation. Use a soft wire small enough to insert into the oil dispenser (Fig. 21).

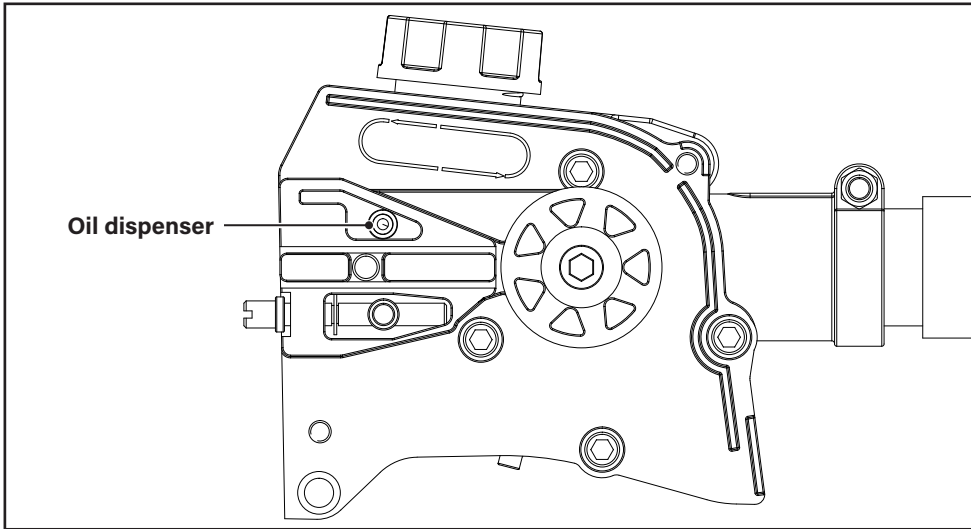


Fig. 21

3. Check the saw chain (C7) for possible wear and damages. Have the saw chain sharpened professionally at an authorised service centre or replace it with a new one if required.
4. Clean the sprocket wheel. Using a disposable lube gun, insert the needle nose into the lubrication hole (C6) and inject grease until it appears at the outside edge of the sprocket.
5. Rotate the saw chain (C7) by hand. Repeat the lubrication procedure until the entire sprocket has been greased.

CUTTING LINE



WARNING! After changing the cutting line (D10), run the machine under no load for at least 1 minute to make sure that the line was installed properly and the machine operates correctly.



WARNING! Never use steel threads or steel cutting lines!



NOTICE! If the cutting line (D10) is used up, either the spool must be replaced by one of the same type or the cutting line must be refilled.



NOTICE! To keep the cutting line (D10) elastic, remove the string trimmer head (D11) and store it in a damp place. Two or three days before the start of the new season, place the cutting line in water to keep it flexible.

Spool replacement

1. Stop the engine.
2. Hold the cover of the string trimmer head (D11). Using the index finger and thumb firmly squeeze the locking tabs on the string trimmer head (Fig. 22, step 1, 2). Remove the cover of the string trimmer head (D11) (Fig. 22, step 3).
3. Remove the spool from the string trimmer head (D11) (Fig. 22, step 4).
4. Install the new spool into the string trimmer head (D11) (Fig. 22, step 5).
5. To reinstall the trimmer head cover, align the mounting holes on the cover of the string trimmer head (D11) with the locking tabs on the string trimmer head housing.
6. Press the locking tabs (Fig. 22, step 6) and push the cover of the string trimmer head (D11) onto the string trimmer head housing (Fig. 22, step 7). Make sure they are secured tightly.

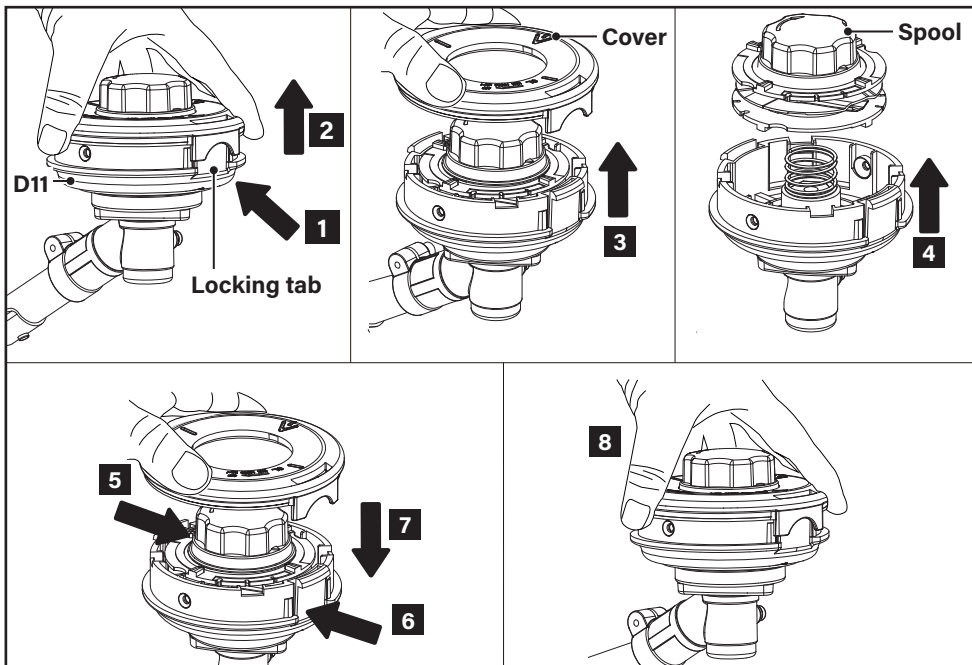


Fig. 22

Line replacement

1. Wind new cutting line (D10) onto an empty spool.
2. Press and rotate the spool head to align the arrow on spool head and the line on the cover of the string trimmer head (D11) (Fig. 23, step 1).
3. Cut a new cutting line to approx. 4 m with a diameter of 2.4 mm.
4. Insert one end of the cutting line (D10) into the eyelet on the housing of the string trimmer head (D11) and the spool in the trimmer head. Insert the cutting line until it emerges from the hole on the opposite side of the string trimmer head (Fig. 23, step 2).
5. Pull the cutting line (D10) out to approx. 2 m in length (Fig. 23, step 3).

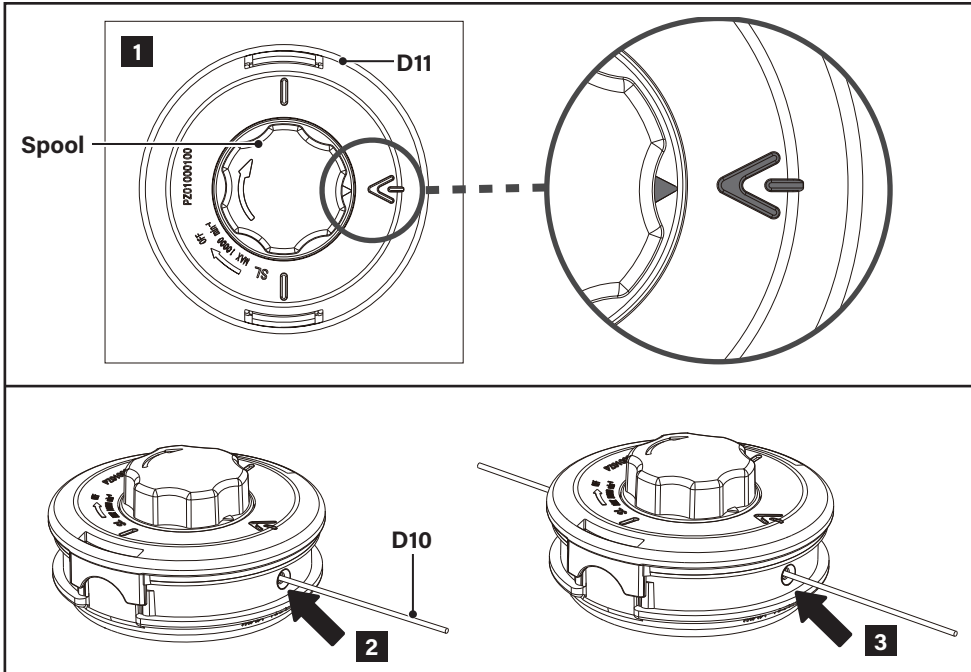


Fig. 23

6. Press and rotate the spool head in clockwise direction to wind the cutting line (D10) in the spool (Fig. 24).

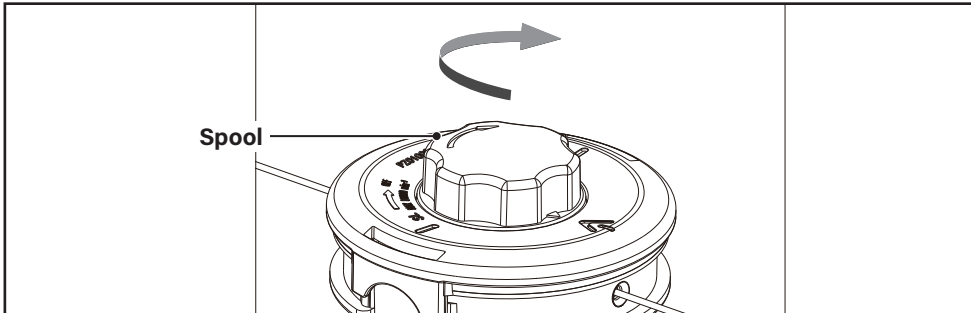


Fig. 24

7. Check the cover of the string trimmer head (D11), the spool and string trimmer head housing for wear. Replace parts if necessary.

AIR FILTER



NOTICE! Inspect the air filter regularly. Clean or replace it with a new one if necessary.

1. Loosen the screw on the cover of the air filter case (A2).
2. Remove the cover from the air filter case (A2).
3. Remove the air filter and tap it on a stable surface to remove dust. Use compressed air (max. 3 bar) to remove stubborn dust.
4. Clean the air filter in warm, soapy water as required.
5. Let the air filter dry completely.
6. Refit the air filter and the cover of the air filter case (A2).
7. Fasten the screw on the cover of the air filter case (A2) to secure it in place.

FUEL, FUEL LINES AND FUEL FILTER



NOTICE! The fuel tank of this machine is fitted with a filter located at the free end of the fuel pipe. If it is necessary to clean or replace the fuel filter, contact an authorised service centre or a similarly qualified person.

- Keep fuel fresh (less than 30 days) or add fuel stabiliser.
- Empty the fuel tank after every use.
- Run the machine dry of fuel in idle before storage.
- Replace fuel lines and fuel filters every 2 years.

SPARK PLUG



NOTICE! Inspect the spark plug every 25 hours of operation or before long-term storage over 30 days. Clean or replace with a new one if necessary (type: TORCH L8RTC).



NOTICE! Do not over tighten the spark plug (A1) to avoid any damage!

1. Unplug the spark plug (A1).
2. Loosen the spark plug in anti-clockwise direction using the multitool 3 (F8) and remove it carefully.
3. Check the spark plug for damage and wear. The colour of the ground electrode should be light-brown.
4. Remove the deposits from the electrode with a soft wired brush. Avoid heavy cleaning of the electrode.
5. Dry the spark plug (A1) with a soft cloth, if it is wet from fuel.
6. Check the spark plug gap. It should be 0.6-0.7 mm (Fig. 25).

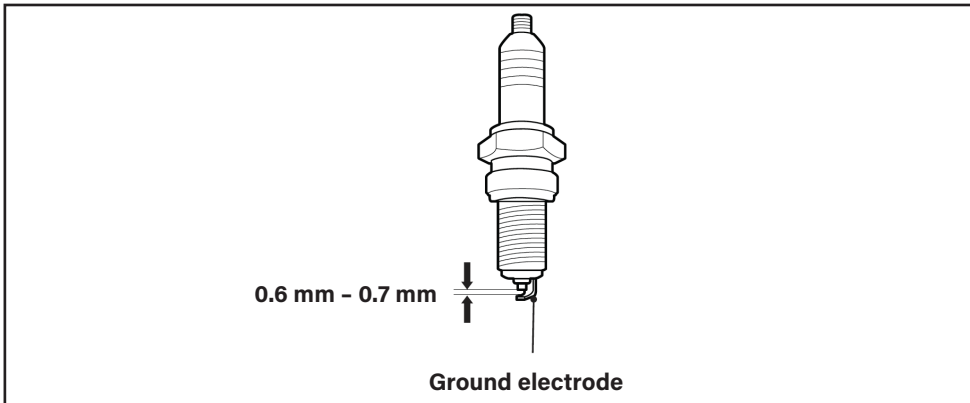


Fig. 25

7. Replace with a new spark plug (A1) if either the electrode or the insulation is damaged.
8. When replacing the spark plug (A1), first screw it in hand tight and then lightly tighten it with the multitool 3 (F8).
9. Refit the spark plug (A1).

MAINTENANCE TABLE

Part	Task	Before/ after each use	Every 10 hours of operation	Every 25 hours of operation
Spark plug	check			X
	clean			X
	replace	whenever necessary		
Air filter	check	X		
	clean		X	
	replace	whenever necessary		
Fuel filter and fuel lines	clean	whenever necessary		
	replace	whenever necessary, or every 2 years		
Cutting device	check	X		
	lubricate	X		
	clean	X		
	replace/sharpen	whenever necessary		
Gear box (hedge trimmer)	lubricate			X
Sprocket wheel (pole pruner)	lubricate			X
Saw chain	check	X		
	lubricate	X		
	clean	X		
	replace	whenever necessary		
Guide bar	check	X		
	clean	X		
	replace	whenever necessary		

SPARE PARTS/REPLACEMENT PARTS

The following parts of this machine may be replaced by the consumer. Spare parts are available at an authorised dealer or through our customer service.

Part	Model number or specification
Spark plug (A1)	TORCH L8RTC
Saw chain (C7)	CL15044X
Guide bar (C8)	M1501244-1318
Cutting line (D10)	Ø2.4 mm x 4 m

STORAGE

SHORT TERM STORAGE

- Let the machine cool down completely.
- Clean the machine as described (see "Cleaning and maintenance").
- Attach transportation guards, if applicable.
- Store the machine and its accessories in a dry, frost-free, well-ventilated place.
- Always store the machine in a place that is inaccessible to children. The ideal storage temperature is between +10 and +30 °C.
- Cover the machine with a suitable cloth to protect it against dust and to avoid injuries.

LONG TERM STORAGE



NOTICE! Risk of machine damage! If you are not going to use the machine for a while, remove the fuel from the machine. Store the machine in a dry place and far away from possible sources of ignition such as ovens, gas thermostats, etc.

1. Empty the fuel tank (A5) using a fuel pump if you are not going to use the machine for more than 1 day, and especially before winter storage.
2. Start the engine and let it run in idle mode until the engine stops by itself (see "Starting the engine").
3. Let the engine cool down completely.
4. Unplug the spark plug (A1).
5. Remove the spark plug using the multi-tool 1 (F6).
6. Let a teaspoon of clean two-stroke engine oil run into the combustion chamber.
7. Pull the recoil starter handle (A3) slowly several times in order to coat the internal components with the engine oil.
8. Refit the spark plug (A1).

TRANSPORTATION

- Stop the engine and disconnect the spark plug (A1) before transporting the machine.
- Attach transportation guards, if applicable.
- Always carry the machine by its main shaft tube (A11) (Fig. 24).

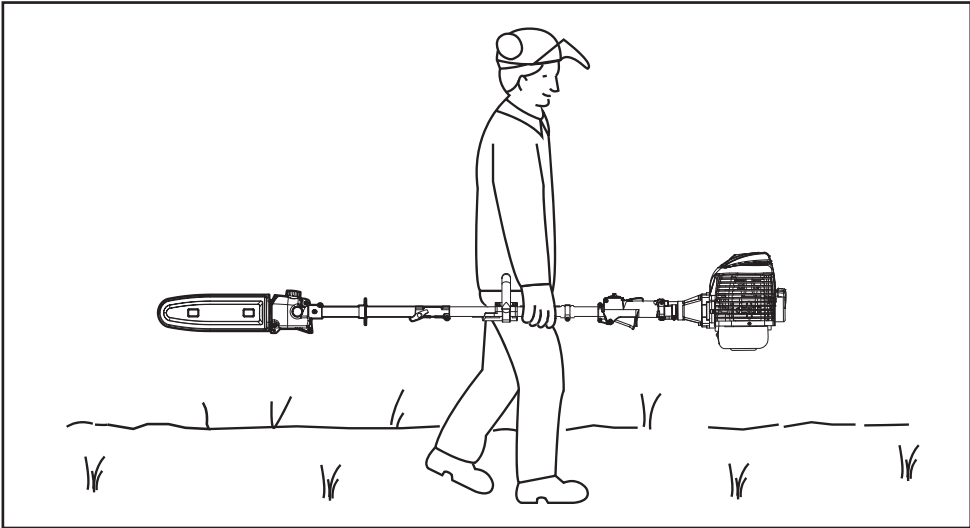


Fig. 24

- Protect the machine from any heavy impact or strong vibrations which may occur during transportation in vehicles.
- Secure the machine to prevent it from slipping or falling over, loss of fuel, damage and injury.

TROUBLESHOOTING

Suspected malfunctions are often due to causes that the operators can fix themselves. Therefore check the machine using this section. In most cases, the problem can be solved quickly.



WARNING! Only perform the steps described in these instructions! All further inspection, maintenance and repair work must be performed by an authorised service centre or a similarly qualified person if you cannot solve the problem yourself!

Problem	Check	Cause	Solution
The machine fails to start.	Fuel tank (A5)	Incorrect fuel was used.	Drain the fuel tank (A5) and use the correct fuel.
		The fuel filter is clogged.	Replace the fuel filter (see "Cleaning and maintenance").
	Spark plug (A1)	The spark plug (A1) is fouled or wet.	Clean and dry the spark plug (A1).
		The plug gap is incorrect.	Ensure the correct gap size (0.6–0.7 mm).
		The spark plug (A1) is disconnected.	Re-tighten the spark plug (A1).
The machine starts but does not keep running.	Fuel tank (A5)	Incorrect fuel was used.	Drain the fuel tank (A5) and use the correct fuel.
	Air filter	The air filter is clogged with dust.	Clean the air filter (see "Cleaning and maintenance").

RECYCLING AND DISPOSAL

Old products are potentially recyclable and do not, therefore, belong in your household rubbish. You are requested to assist us and our contribution to saving resources and protecting the environment by handing in this appliance at an equipped collection centre (if there is one available).

Petrol, oil, used oil, mixtures of oil and petrol and objects contaminated with oil, e.g. cleaning cloths; do not belong with household waste. Dispose of oil contaminated items in accordance with the local guidelines and hand them in at recycling centres.

The product comes in a package that protects it against damages during shipping. Keep the package until you are sure that all parts have been delivered and the product is function properly. Recycle the package afterwards.

WARRANTY

We take special care to select high quality materials and use manufacturing techniques that allow us to create products incorporating design and durability. This product has a manufacturer's guarantee of 2 years against manufacturing defects, from the date of purchase (if bought in store) or date of delivery (if bought online), at no additional cost for normal (non-professional or commercial) household use.

To make a claim under this guarantee, you must present your proof of purchase (such as a sales receipt, purchase invoice or other evidence admissible under applicable law), please keep your proof of purchase in a safe place. For this guarantee to apply, the product you purchased must be new, it will not apply to second hand or display products. Unless stated otherwise by applicable law, any replacement product issued under this guarantee will only be guaranteed until expiry of the original period guarantee period.

This guarantee covers product failures and malfunctions provided the product was used for the purpose for which it is intended and subject to installation, cleaning, care and maintenance in accordance with the information contained in these terms and conditions, in the user manual and standard practice, provided that standard practice does not conflict with the user manual.

This guarantee does not cover defects and damage caused by normal wear and tear or damage that could be the result of improper use, faulty installation or assembly, neglect, accident, misuse, or modification of the product. Unless stated otherwise by applicable law, this guarantee will not cover, in any case, ancillary costs (shipping, movement, costs of uninstalling and reinstalling, labour etc), or direct and indirect damage.

This guarantee does not cover defects and damage caused by or resulting from:

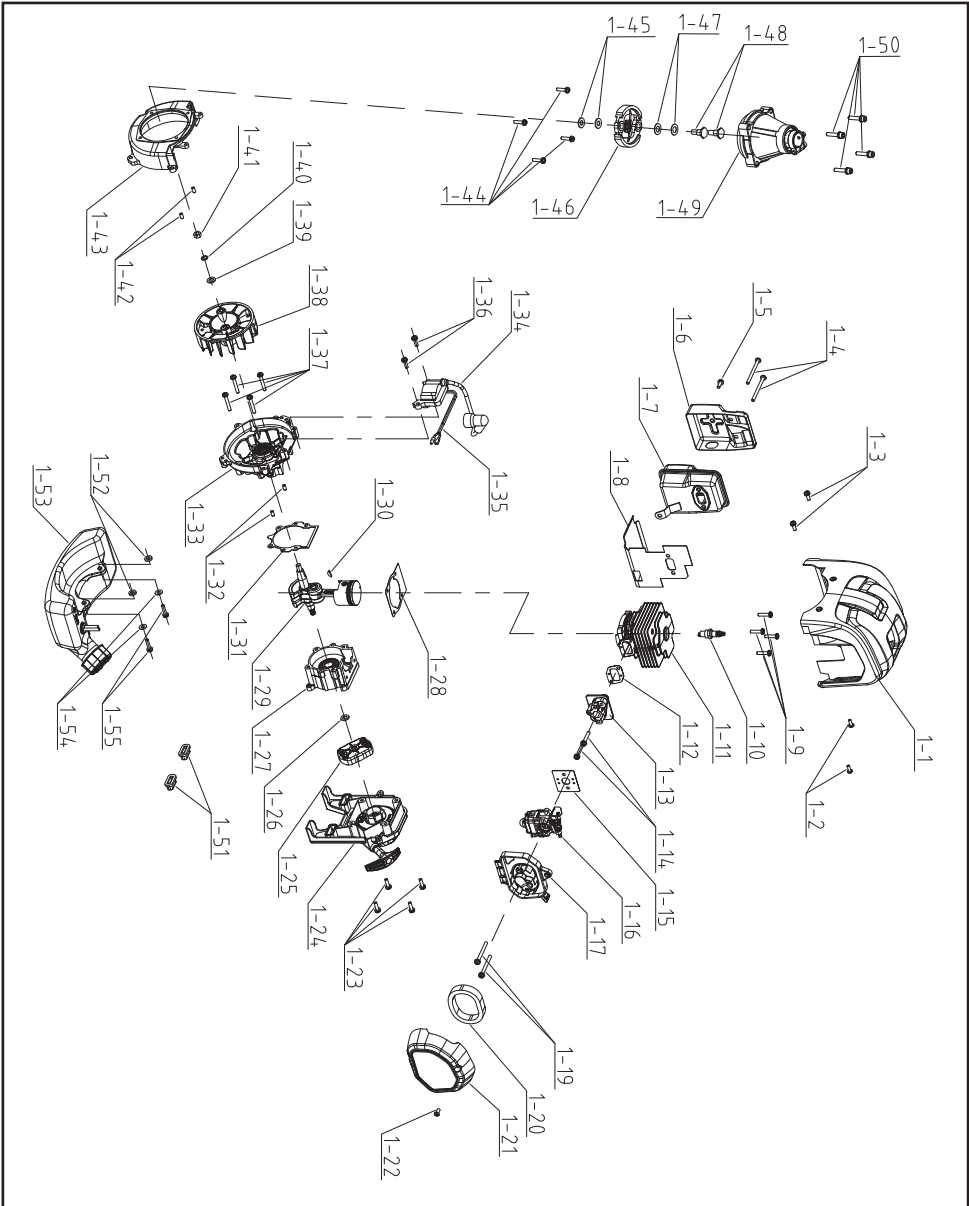
- Normal wear and tear
- Overload, misuse or neglect
- Repairs attempted by anyone other than an authorised agent
- Cosmetic damage
- Damage caused by foreign objects, substances or accidents
- Accidental damage or modification
- Failure to follow manufacturer's guidelines
- Loss of use of the goods

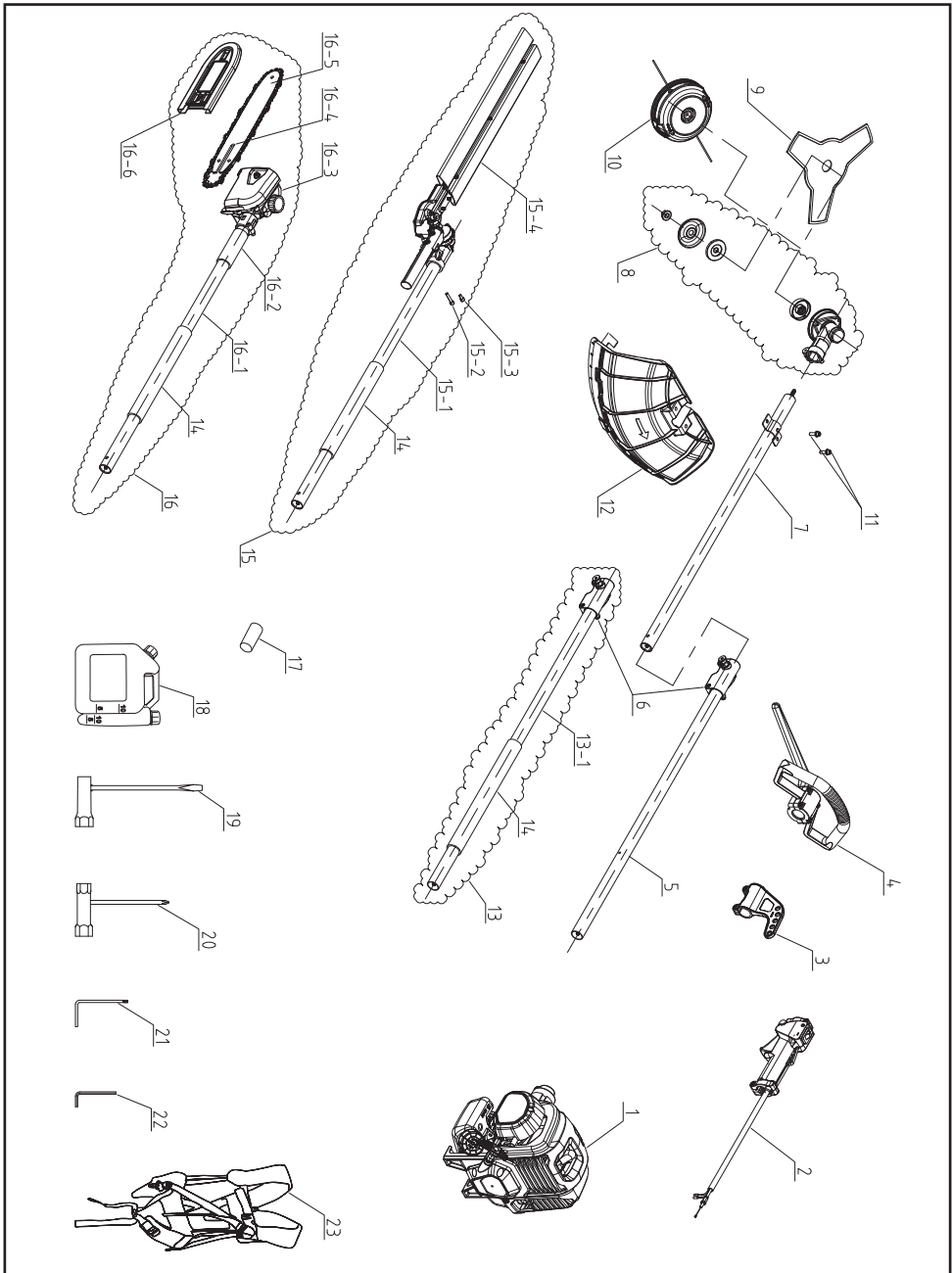
If the product is defective, we will, within a reasonable time, repair, replace or provide spare parts.

Rights under this guarantee are enforceable in the country in which you purchased this product. Guarantee related queries should be addressed to the store you purchased this product from.

The guarantee is in addition to and does not affect your statutory rights.

PARTS DIAGRAM





No.	Part name	Qty.
1	Engine	1
1-1	Top cover, asm	1
1-2	Screw ST4.5X12	2
1-3	Screw ST5X12	2
1-4	Screw M6X60	2
1-5	Screw M5X15	1
1-6	Thermal shroud	1
1-7	Muffler	1
1-8	Exhaust gasket	1
1-9	Screw M5X23	4
1-10	Ignition plug	1
1-11	Cylinder	1
1-12	Carburetor gasket	1
1-13	Carburetor seat	1
1-14	Screw M5X30	2
1-15	Carburetor gasket	1
1-16	Carburetor	1
1-17	Body of air filter, asm	1
1-19	Screw M5X55	2
1-20	Air filter	1
1-21	Air filter cover	1
1-22	Screw M5X14	1
1-23	Screw M5X18	4
1-24	Starter, asm	1
1-25	Startup disk	1
1-26	Washer 8	1
1-27	Back crank case, asm	1
1-28	Gasket of cylinder	1
1-29	Crankshaft and piston, asm	1

No.	Part name	Qty.
1-30	Woodruff key	1
1-31	Gasket of crank case	1
1-32	Locating pin 5x10 (h8)	2
1-33	Front crank case, asm	1
1-34	Ignition apparatus (not shown)	1
1-35	Wire (not shown)	1
1-36	Screw M5*23	2
1-37	Screw M5*35	4
1-38	Flywheel	1
1-39	Washer 8	1
1-40	Spring washer 8	1
1-41	Nut M8	1
1-42	Locating pin 4x10	2
1-43	Clutch cover, asm	1
1-44	Screw M5X23	4
1-45	Washer Ø18*Ø8.4*1.2	2
1-46	Clutch	1
1-47	Washer	2
1-48	Washer	2
1-49	Clutch	1
1-50	Screw M6X30	4
1-51	Cushion of fuel tank	2
1-52	Rubber pad	2
1-53	Fuel tank, asm	1
1-54	Washer Ø5*Ø13.5	2
1-55	Screw M5X23	2
2	Control handle, asm	1
3	Back strap holder plate, asm	1
4	Secondary handle, asm	1

No.	Part name	Qty.
5	Tube, asm	1
6	Connector, asm	2
7	Tube, asm	1
8	Drive gear	1
9	Blade, asm	1
10	Trimmer head, asm	1
11	Sheath	2
12	Safety cover, asm	1
13	Extension bar, asm	1
14	Rubber tube	3
15	Lopper, asm	1
16	Lopper saw, asm	1
17	Sheath	3
18	Ratio bottle	1
19	Wrench	1
20	Wrench	1
21	Screw driver T25	1
22	Inner hex spanner 5	1
23	Shoulder belt	1
24	Safety goggles	1
25	Earmuff	1
26	Work gloves	1



SGS Engineering (UK) Ltd
West Side Park
Raynesway
Derby, DE21 7AZ

EC Declaration of Conformity

This is an important document and should be retained

MANUFACTURER'S NAME: **SGS Engineering (UK) Ltd**
TYPE OF EQUIPMENT: **Multi Tool**
PART NUMBER: **PMULT520**

APPLICATION OF EC COUNCIL DIRECTIVES / STANDARD:

2006/42/EC	Machinery Directive
2014/30/EU	Electromagnetic Compatibility Directive
(EU) 2016/1628+(EU)2018/989	Directive of Emission
2000/14/EC+2005/88/EC	Directive of EU Noise
2011/65/EU+(EU)2015/863	RoHS Directive

EN ISO 11806-1:2022
EN ISO 10517:2019
EN ISO 11680-1:2021
EN ISO 14982:2009

Measured sound power level: 111,7 dB (A)
Guaranteed sound power level: 115 dB (A)
Conformity assessment procedure concerning directive
2000/14/EC: Annex V

I, the undersigned, hereby declare that the equipment specified above conforms to the above European Communities Directive(s) and Standard(s).

PLACE: **Derby, UK**

DATE: **22th Oct 2025**

A handwritten signature in black ink, appearing to read 'Neil Sansom', written over a horizontal line.

(Signature)

Neil Sansom
Company CEO